



# Parts Catalog

CATALOG 09-A-1

# *Fan Clutch*

**FAN CLUTCH CATALOG INDEX**

<b>SECTION</b>	<b>CATALOG PAGE NO.</b>
<b>FD-1 Service Parts</b> .....	09-A-6
<b>FD-2 Service Parts</b> .....	09-A-7
<b>FD-3 Standard and 2.560"</b>	
<b>Pilot Dia. Service Parts</b> .....	09-A-8
<b>FD-L Service Parts</b> .....	09-A-10
<b>Fan Clutch Control Valves and Accessories</b> .....	09-A-11
<b>Fan Clutch O.E. to service piece no. changeover</b> .....	09-A-3
<b>Fan Clutch Competitive Changeover Information</b> .....	09-A-12
<b>Fan Clutch Engine Application Data</b>	
Caterpillar .....	09-B-1
Cummins .....	09-B-5
Detroit Diesel .....	09-B-13
<b>Fan Clutch Vehicle Application Data</b>	
Brockway .....	09-C-2
Dina Autobuses .....	09-C-2
Eagle International (Bus) .....	09-C-2
Flxible .....	09-C-2
Ford .....	09-C-3
Freightliner .....	09-C-4
GMC .....	09-C-5
Halliburton .....	09-C-5
Marmon .....	09-C-5
Kenworth .....	09-C-6
Navistar .....	09-C-7
Peterbilt .....	09-C-9
Volvo .....	09-C-10
Western Star Truck Co. ....	09-C-11

# FAN CLUTCH

## CATALOG INDEX

## CATALOG 09-A-3

O.E. Fan Clutch Piece Number	Model	FD-1	FD-L	FD-3	Page No.
101137	FD-1	-	-	104886	09-B-15
101248	FD-1	-	-	104764	09-B-13
101259	FD-1	-	-	104761	09-B-9
101313	FD-1	-	-	104881	09-B-6
101448	FD-1	-	-	-	N/A
101517	FD-1	-	-	104750	09-B-7
101644	FD-1	-	-	-	N/A
101776	FD-1	-	-	104764	09-B-13
101778	FD-1	-	-	104905	09-B-2
101855	FD-1	-	-	-	N/A
101875	FD-1	102575	-	-	N/A
101992	FD-1	-	-	-	N/A
101993	FD-1	-	-	-	N/A
102011	FD-1	-	-	-	N/A
102012	FD-1	-	-	102576	N/A
102050	FD-1	-	-	104892	09-B-14
102064	FD-1	-	-	104764	09-B-13
102069	FD-1	-	-	104905	09-B-2
102171	FD-1	-	-	-	N/A
102184	FD-1	-	-	-	N/A
102203	FD-1	-	-	-	N/A
102208	FD-1	-	-	104761	09-B-9
102334	FD-1	-	-	104882	09-B-6
102335	FD-1	-	-	104879	09-B-6
102513	FD-1	102821	-	-	N/A
102532	FD-1	102532	-	-	09-B-5
102571	FD-1	-	-	104764	09-B-13
102572	FD-1	-	-	104761	09-B-9
102573	FD-1	-	-	104764	09-B-13
102574	FD-1	-	-	-	N/A
102575	FD-1	102575	-	-	N/A
102576	FD-1	-	-	-	N/A
102577	FD-1	-	-	104764	09-B-13
102620	FD-1	102620	-	104770	09-B-8
102621	FD-1	102621	-	104750	09-B-7
102666	FD-1	-	-	102666	09-B-9
102792	FD-1	-	-	104758	09-B-1
102809	FD-1	-	-	104883	09-B-15
102821	FD-1	102821	-	-	N/A
102839	FD-1	-	-	104893	09-B-14
102982	FD-1	-	-	104875	09-B-15
102996	FD-1	-	-	-	N/A
104725	FD-3	-	-	104725	09-B-5
104735	FD-3	-	-	104735	09-B-5
104750	FD-3	-	-	104750	09-B-7
104751	FD-3	-	-	104751	09-B-7
104752	FD-3	-	-	104756	09-B-7
104753	FD-3	-	-	104757	09-B-7
104756	FD-3	-	-	104752	09-B-7
104757	FD-3	-	-	104757	09-B-7
104758	FD-3	-	-	104758	09-B-1
104759	FD-3	-	-	104760	09-B-1
104760	FD-3	-	-	104760	09-B-1

N/A - Not Available

O.E. Fan Clutch Piece Number	Model	FD-1	FD-L	FD-3	Page No.
104761	FD-3	-	-	104761	09-B-9
104762	FD-3	-	-	104763	09-B-9
104763	FD-3	-	-	104763	09-B-9
104764	FD-3	-	-	104764	09-B-13
104765	FD-3	-	-	104765	09-B-13
104766	FD-3	-	-	104765	09-B-13
104767	FD-3	-	-	104767	09-B-2
104768	FD-3	-	-	104769	09-B-2
104769	FD-3	-	-	104769	09-B-2
104770	FD-3	-	-	104770	09-B-8
104771	FD-3	-	-	104772	09-B-8
104772	FD-3	-	-	104772	09-B-8
104773	FD-3	-	-	104773	09-B-10
104774	FD-3	-	-	104775	09-B-10
104775	FD-3	-	-	104775	09-B-10
104776	FD-3	-	-	104776	09-B-10
104777	FD-3	-	-	104778	09-B-10
104778	FD-3	-	-	104778	09-B-10
104779	FD-3	-	-	104779	09-B-1
104780	FD-3	-	-	104781	09-B-1
104781	FD-3	-	-	104781	09-B-1
104782	FD-3	-	-	104782	09-B-15
104783	FD-3	-	-	104784	09-B-15
104784	FD-3	-	-	104784	09-B-15
104785	FD-3	-	-	104785	09-B-10
104786	FD-3	-	-	104787	09-B-10
104787	FD-3	-	-	104787	09-B-10
104870	FD-3	-	-	104870	09-B-2
104871	FD-3	-	-	104871	09-B-9
104872	FD-3	-	-	104872	09-B-9
104873	FD-3	-	-	104873	09-B-15
104874	FD-3	-	-	104874	09-B-15
104875	FD-3	-	-	104875	09-B-15
104876	FD-3	-	-	104876	09-B-15
104877	FD-3	-	-	104877	09-B-5
104878	FD-3	-	-	104878	09-B-5
104879	FD-3	-	-	104879	09-B-6
104880	FD-3	-	-	104880	09-B-6
104881	FD-3	-	-	104881	09-B-6
104882	FD-3	-	-	104882	09-B-6
104883	FD-3	-	-	104883	09-B-15
104884	FD-3	-	-	104884	09-B-15
104885	FD-3	-	-	104885	09-B-15
104886	FD-3	-	-	104886	09-B-15
104887	FD-3	-	-	104887	09-B-15
104889	FD-3	-	-	104889	09-B-3
104890	FD-3	-	-	104890	09-B-13
104891	FD-3	-	-	104891	09-B-13
104892	FD-3	-	-	104892	09-B-14
104893	FD-3	-	-	104893	09-B-14
104894	FD-3	-	-	104894	09-B-9
104895	FD-3	-	-	104894	09-B-9
104896	FD-3	-	-	104896	09-B-7

O.E. Fan Clutch Piece Number	Model	FD-1	FD-L	FD-3	Page No.
104897	FD-3	-	-	104897	09-B-14
104898	FD-3	-	-	104898	09-B-9
104899	FD-3	-	-	104899	09-B-16
104900	FD-3	-	-	104900	09-B-14
104901	FD-3	-	-	104901	09-B-16
104902	FD-3	-	-	104902	09-B-8
104903	FD-3	-	-	104903	09-B-8
104904	FD-3	-	-	104904	09-B-5
104905	FD-3	-	-	104905	09-B-2
104906	FD-3	-	-	104906	09-B-17
104907	FD-3	-	-	104907	N/A
104915	FD-3	-	-	104750	09-B-7
104916	FD-3	-	-	104751	09-B-7
104917	FD-3	-	-	104758	09-B-1
104918	FD-3	-	-	104761	09-B-9
104919	FD-3	-	-	104764	09-B-13
104920	FD-3	-	-	104767	09-B-2
104921	FD-3	-	-	104770	09-B-8
104922	FD-3	-	-	104773	09-B-10
104923	FD-3	-	-	104776	09-B-10
104924	FD-3	-	-	104779	09-B-1
104925	FD-3	-	-	104782	09-B-15
104926	FD-3	-	-	104785	09-B-10
104965	FD-3	-	-	104965	09-B-8
104981	FD-3	-	-	104981	09-B-8
104987	FD-3	-	-	104989	09-B-2
104988	FD-3	-	-	104990	09-B-1
104989	FD-3	-	-	104989	09-B-2
104990	FD-3	-	-	104990	09-B-1
106091	FD-3	-	-	106091	09-B-2
106092	FD-3	-	-	106092	09-B-15
106093	FD-3	-	-	106093	09-B-6
106094	FD-3	-	-	106094	N/A
106095	FD-3	-	-	106095	09-B-14
106096	FD-3	-	-	106096	09-B-6
106097	FD-3	-	-	106097	09-B-9
106098	FD-3	-	-	106098	09-B-6
106099	FD-3	-	-	106099	09-B-8
106120	FD-3	-	-	106120	09-B-2
106235	FD-3	-	-	106235	09-B-2
106236	FD-3	-	-	106236	09-B-8
106237	FD-3	-	-	106876	09-B-9
106238	FD-3	-	-	106350	09-B-9
106270	FD-3	-	-	106270	09-B-2
106271	FD-3	-	-	106271	09-B-15
106272	FD-3	-	-	106272	09-B-8
106291	FD-3	-	-	106291	09-B-1
106319	FD-3	-	107571	106319	N/A
106350	FD-3	-	-	106350	09-B-9
106430	FD-3	-	-	107542	09-B-5
106450	FD-3	-	-	106450	09-B-9
106495	FD-3	-	-	-	N/A

O.E. Fan Clutch Piece Number	Model	FD-1	FD-L	FD-3	Page No.
106723	FD-L	-	-	106724	09-B-10
106724	FD-L	-	-	106724	09-B-10
106734	FD-3	-	-	106970	09-B-10
106772	FD-3	-	-	106970	09-B-10
106841	FD-3	-	-	106842	09-B-10
106842	FD-3	-	-	106842	09-B-10
106844	FD-3	-	-	106844	09-B-9
106866	FD-3	-	-	106866	09-B-15
106876	FD-3	-	-	106876	09-B-9
106969	FD-L	-	-	106970	09-B-10
106970	FD-L	-	-	106970	09-B-10
106973	FD-L	-	-	106974	09-B-1
106974	FD-L	-	-	106974	09-B-1
107147	FD-3	-	-	107147	09-B-4
107172	FD-3	-	-	107473	09-B-11
107173	FD-3	-	-	107473	09-B-11
107242	FD-3	-	-	107543	09-B-2
107243	FD-3	-	-	107544	09-B-2
107449	FD-3	-	-	-	N/A
107472	FD-L	-	-	107473	09-B-11
107473	FD-L	-	-	107473	09-B-11
107480	FD-3	-	-	107480	09-B-2
107542	FD-L	-	-	107542	09-B-5
107543	FD-L	-	-	107543	09-B-2
107544	FD-L	-	-	107544	09-B-2
107580	FD-3	-	-	107580	09-B-8
107626	FD-L	-	-	107627	09-B-11
107627	FD-L	-	-	107627	09-B-11
107638	FD-3	-	-	107638	09-B-13
107815	FD-3	-	-	104981	09-B-8
107878	FD-L	-	-	107941	09-B-12
107889	FD-L	-	-	107942	09-B-10
107899	FD-3	-	-	107899	N/A
107900	FD-L	-	-	107901	09-B-4
107901	FD-L	-	-	107901	09-B-4
107940	FD-3	-	-	107940	09-B-8
107941	FD-L	-	-	107941	09-B-12
107942	FD-L	-	-	107942	107889 09-B-10
107970	FD-3	-	-	107970	09-B-8
108006	FD-3	-	-	108006	09-B-5
108057	FD-L	-	-	108122	09-B-17
108122	FD-L	-	-	108122	09-B-17
108323	FD-3	-	-	108323	09-B-8
108378	FD-L	-	-	108380	09-B-17
108380	FD-L	-	-	108380	09-B-17
108432	FD-L	-	-	108464	09-B-3
108445	FD-L	-	-	108450	09-B-18
108450	FD-L	-	-	108450	09-B-18
108458	FD-L	-	-	108461	09-B-11
108459	FD-L	-	-	108460	09-B-12
108460	FD-L	-	-	108460	09-B-12
108461	FD-L	-	-	108461	09-B-11

# FAN CLUTCH

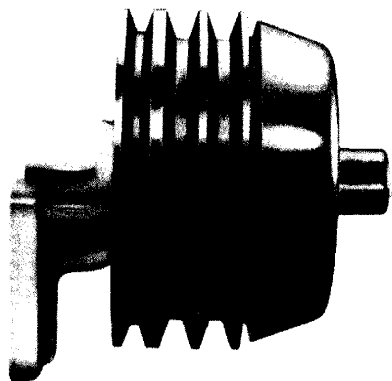
## CATALOG INDEX

## CATALOG 09-A-5

O.E. Fan Clutch Piece Number	Model	FD-1	FD-L	FD-3	Page No.
108462	FD-L	-	108463	-	09-B-1
108463	FD-L	-	108463	-	09-B-1
108464	FD-L	-	108464	-	09-B-3
108483	FD-L	-	108483	-	09-B-15
108497	FD-L	-	108497	-	09-B-4
108530	FD-L	-	108530	-	09-B-2
108531	FD-L	-	108531	-	09-B-2
108532	FD-L	-	108532	-	09-B-4
108533	FD-L	-	108533	-	09-B-15
108534	FD-L	-	108534	-	09-B-15
108552	FD-L	-	108552	-	09-B-8
108553	FD-L	-	108553	-	09-B-8
108601	FD-3	-	-	108602	N/A
108602	FD-3	-	-	108602	N/A
108605	FD-3	-	-	108606	N/A
108606	FD-3	-	-	108606	N/A
108609	FD-3	-	-	108610	N/A
108610	FD-3	-	-	108610	N/A
108621	FD-L	-	108261	-	09-B-15
108629	FD-L	-	108633	-	09-B-1
108633	FD-L	-	108633	-	09-B-1
108641	FD-3	-	-	108641	N/A
108663	FD-L	-	108664	-	N/A
108664	FD-L	-	108664	-	N/A
108677	FD-L	-	108678	-	N/A
108678	FD-L	-	108678	-	N/A
108696	FD-L	-	108696	-	09-B-9
108697	FD-L	-	108697	-	09-B-9
108817	FD-3	-	-	108817	09-B-2
108893	FD-L	-	108893	-	09-B-2
109032	FD-3	-	-	109032	09-B-16
287847	FD-1	-	-	104894	09-B-9
288028	FD-1	-	-	104870	09-B-1
288423	FD-1	-	-	-	N/A
288606	FD-1	-	-	104878	09-B-5
288610	FD-1	-	-	104873	09-B-15
288614	FD-1	-	-	104874	09-B-15
288615	FD-1	-	-	104871	09-B-9
288619	FD-1	-	-	104885	09-B-15
288623	FD-1	-	-	104885	09-B-15
288626	FD-1	-	-	104872	09-B-9
288629	FD-1	-	-	-	N/A
288633	FD-1	-	-	104885	09-B-15
288636	FD-1	-	-	104870	09-B-2
288670	FD-1	-	-	104873	09-B-15
288689	FD-1	-	-	104782	09-B-9
288702	FD-1	-	-	-	N/A
288880	FD-1	102620	-	104770	09-B-8
288901	FD-1	-	-	104877	09-B-5
288915	FD-1	-	-	104904	09-B-5
288916	FD-1	-	-	104904	09-B-5
288931	FD-1	-	-	104897	09-B-14

O.E. Fan Clutch Piece Number	Model	FD-1	FD-L	FD-3	Page No.
288938	FD-1	-	-	104892	09-B-14
288945	FD-1	-	-	104880	09-B-6
288991	FD-1	-	-	-	N/A
288994	FD-1	-	-	104871	09-B-9
288996	FD-1	-	-	-	N/A
288997	FD-1	-	-	104883	09-B-15
289000	FD-1	-	-	104896	09-B-7
289046	FD-1	-	-	-	N/A
289047	FD-1	-	-	-	N/A
289048	FD-1	-	-	-	N/A
289049	FD-1	-	-	-	N/A
289063	FD-1	-	-	-	N/A
289064	FD-1	-	-	104899	09-B-16
289065	FD-1	-	-	-	N/A
289066	FD-1	-	-	-	N/A
289067	FD-1	-	-	-	N/A
289068	FD-1	-	-	-	N/A
289069	FD-1	-	-	-	N/A
289070	FD-1	-	-	-	N/A
289228	FD-1	-	-	-	N/A
289386	FD-1	-	-	104889	09-B-3
289482	FD-1	-	-	-	N/A
289504	FD-1	-	-	-	N/A
289520	FD-1	-	-	-	N/A
289526	FD-1	-	-	104890	09-B-13
289537	FD-1	289537	-	-	09-B-15
289538	FD-1	-	-	-	N/A
289552	FD-1	-	-	104897	09-B-14
289563	FD-1	-	-	-	N/A
289564	FD-1	-	-	-	N/A
289565	FD-1	-	-	104901	09-B-16
289673	FD-1	-	-	104884	09-B-15
289679	FD-1	-	-	-	N/A
289693	FD-1	-	-	-	N/A
289694	FD-1	-	-	-	N/A
289695	FD-1	-	-	104900	09-B-14
289761	FD-1	-	-	-	N/A
289813	FD-1	-	-	-	N/A
289836	FD-1	102666	-	-	09-B-9
289841	FD-1	-	-	104872	09-B-9
289873	FD-1	-	-	-	N/A
289935	FD-1	-	-	-	N/A
289990	FD-1	-	-	-	N/A
289995	FD-1	-	-	-	N/A
818714	FD-1	-	-	104872	09-B-9

N/A - Not Available

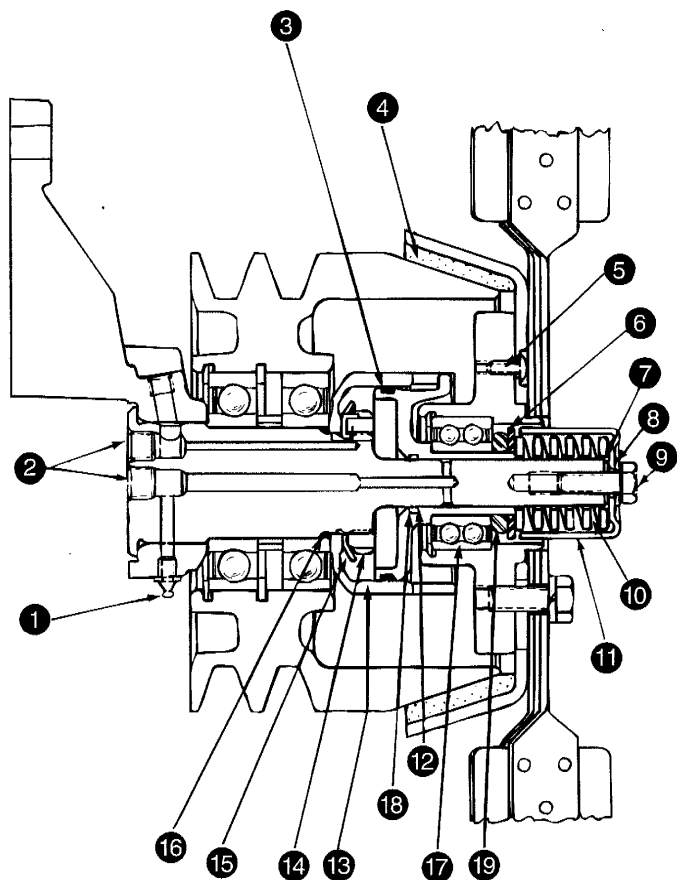


The Bendix FD-1 Fan Clutch is a pneumatically operated, thermostatically controlled clutch for the engine cooling fan. Its purpose is to maintain engine temperature by engaging or disengaging the cooling fan, thereby providing better fuel economy, greater engine efficiency, faster warmups and a quieter vehicle.

The FD-1 is produced in several different models to accommodate the variety of installation requirements resulting from the many engine, vehicle and accessory combinations. Its fail-safe design prevents overheating in the event of component or air line failure.

For Service/Maintenance information, see service data Sheet SD-09-1.

WEIGHT — 40 Lbs. (18.44 kg)  
VMRS NO. is 42-003-013  
DEVICE CODE - 8501



Bearings for FD-1 are either matched or spread - refer to schedule below for piece numbers.

BEARING TYPE	PULLEY BEARING(S) PC. NO.	PULLEY BEARING RETAINING RING(S) PC. NO.	BEARING SPACER PC. NO.
Matched	291458	291459	None
Spread	291861 (2)	291459 110715	291840

NOTE: The Pressure Plate with Lining should be changed when this dimension is a minimum of .12".

**MAINTENANCE KIT  
289319 CONSISTS OF:**

KEY NO.	QTY.	DESCRIPTION
3	1	O-Ring
5	3	Machine Screw
9	1	Cap Screw
12	1	Back Up Ring
18	1	O-Ring

**MAINTENANCE KIT  
288907 CONSISTS OF:**

KEY NO.	QTY.	DESCRIPTION
—	1	Maint. Kit 289319
4	1	Pressure Plate with Lining

**COMMON SERVICE PARTS**

KEY NO.	QTY.	DESCRIPTION	PC. NO.
1	1	Lube Fitting	294292
2	2	1/8" Pipe Plug	233410
6	1	Special Washer	292622
7*	1	Special Washer	294182
8	1	Washer	204235
10	1	Spring	291468
11	1	Spring Retainer	291469
13	1	Piston Housing	291460
14	1	Locknut	291462
15	1	Lockwasher	291461
16	1	O-Ring	292570
17	1	Bearing	291465
19	1	Locknut	292621

\* This part is not available on all FD-1 Clutches. Refer to catalog page 09-A-3 for more details.

# FD-2 FAN CLUTCH

SERVICE PARTS

CATALOG  
09-A-7

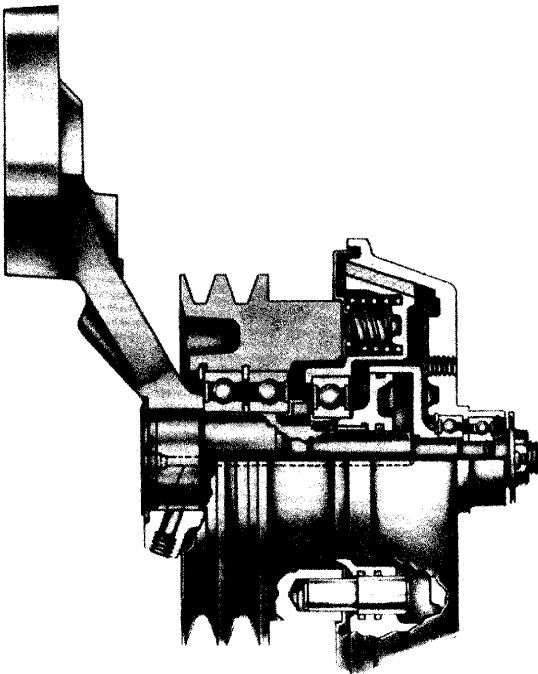
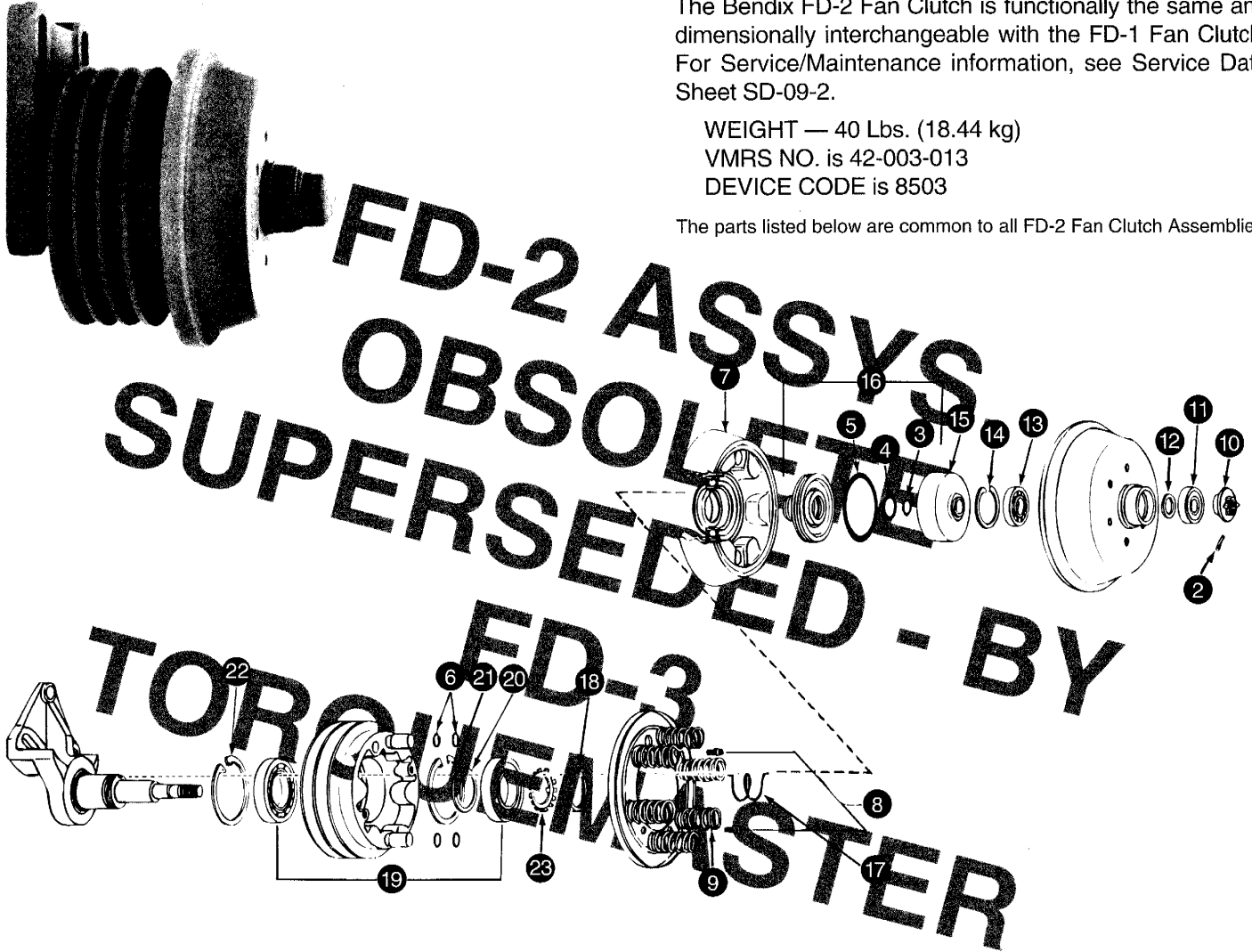
The Bendix FD-2 Fan Clutch is functionally the same and dimensionally interchangeable with the FD-1 Fan Clutch. For Service/Maintenance information, see Service Data Sheet SD-09-2.

WEIGHT — 40 Lbs. (18.44 kg)

VMRS NO. is 42-003-013

DEVICE CODE is 8503

The parts listed below are common to all FD-2 Fan Clutch Assemblies.



### MINOR PARTS KIT 103806 CONSISTS OF:

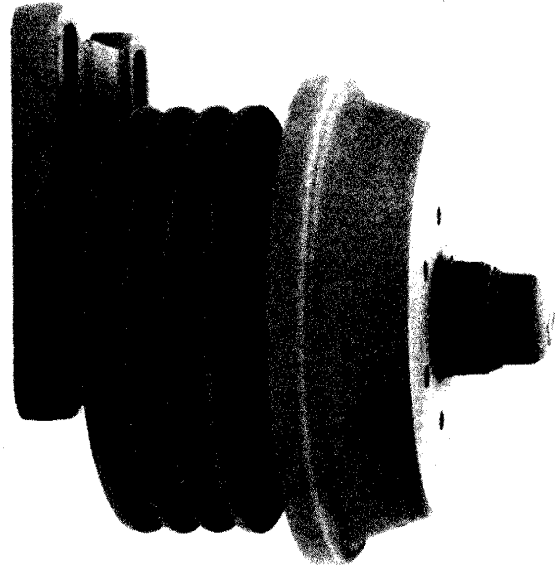
KEY NO.	QTY.	DESCRIPTION
2	1	Cotter Pin
3	1	O-Ring
4	1	O-Ring
5	1	O-Ring
6	4	O-Ring
10	1	Flange Nut

### RELINE KIT 103807 CONSISTS OF:

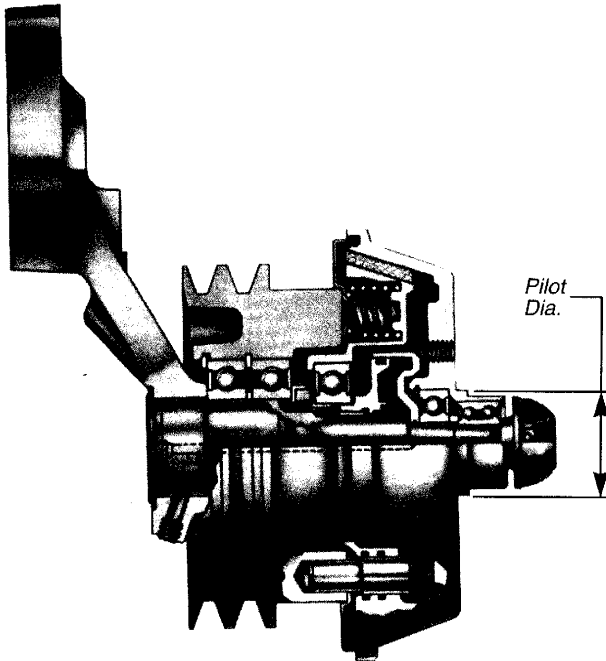
KEY NO.	QTY.	DESCRIPTION
—	1	Minor Parts Kit 103806
7	1	Press. Plate Compl.
8	2	1/4 Sems Screw
9	1	Spring Pack

The Bendix TorqueMaster FD-3 fan clutch is functionally interchangeable with the Bendix FD-1 and FD-2 models. Two versions of the TorqueMaster FD-3 are available one which serves as a direct replacement for the FD-2 (same pilot diameter) and one which is used primarily on Ford vehicles with a 2.56 in. pilot diameter. The TorqueMaster with the 2.56 in. pilot diameter may serve as a replacement for the FD-1 and FD-2 provided the Fan is also replaced. For Service/Maintenance see SD-09-2.

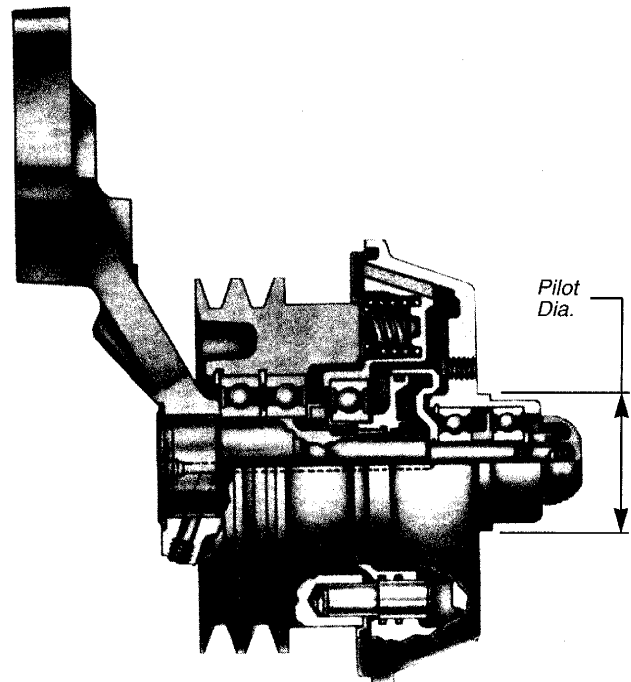
WEIGHT 40 Lbs. (18.44 Kg)  
VMRS NO. 42-003-013  
DEVICE CODE 8504



FD-3 TorqueMaster  
(Standard)



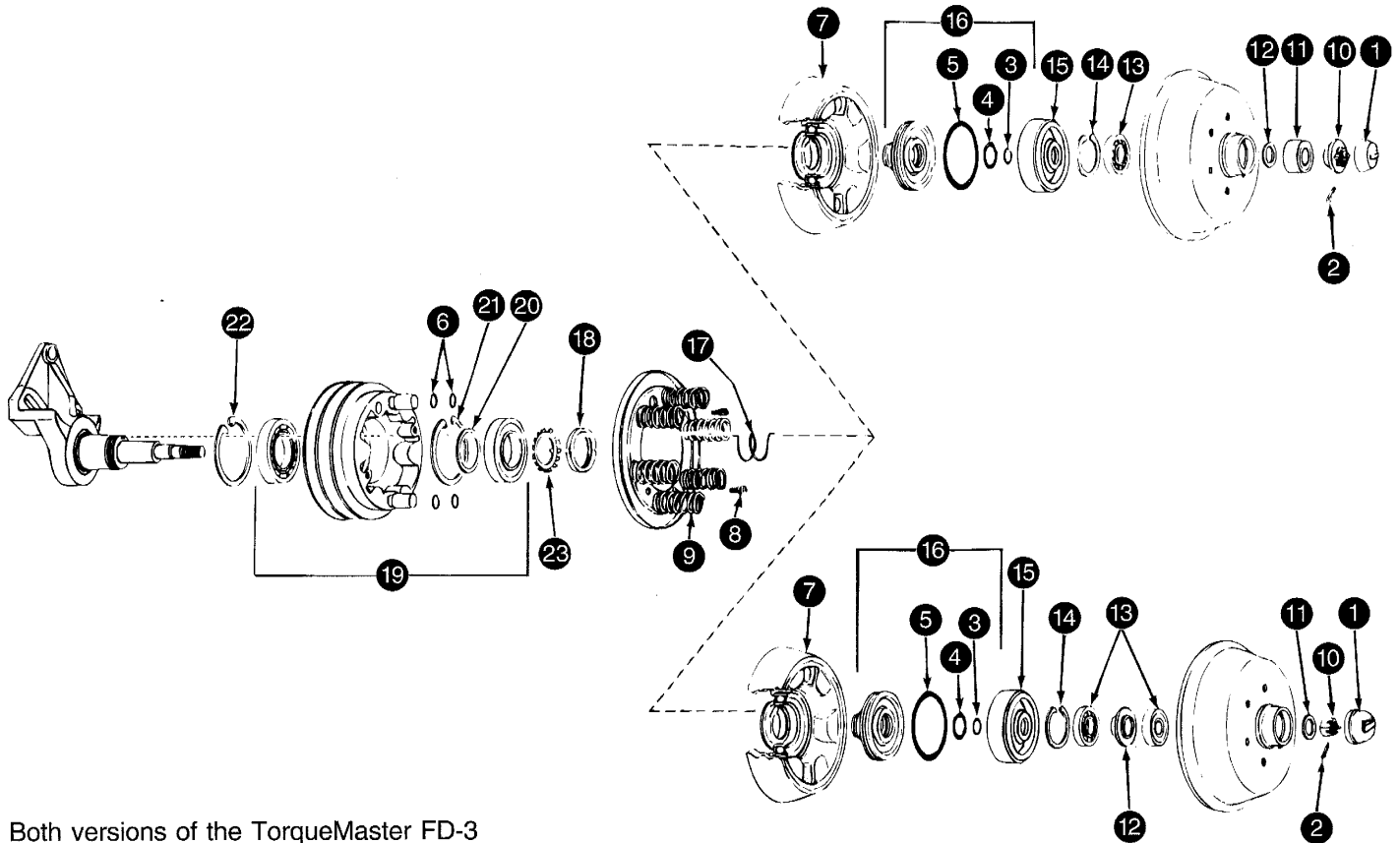
FD-3 TorqueMaster  
(2.56" Pilot Diameter)



These two units can be used interchangeably. However a fan change will be required.



### Standard TorqueMaster FD-3



Both versions of the TorqueMaster FD-3 use the same minor parts kit & reline kit. However the rebuild kits are not interchangeable. (See individual kits).

### TorqueMaster FD-3 with 2.56" Pilot Dia.

#### FD-3 MINOR PARTS KIT 104937 CONSISTS OF:

KEY NO.	QTY.	DESCRIPTION
1	1	Cap
2	1	Cotter Pin
3	1	O-Ring
4	1	O-Ring
5	1	O-Ring
6	4	O-Ring

#### FD-3 RELINE KIT 104938 CONSISTS OF:

KEY NO.	QTY.	DESCRIPTION
—	1	Minor Parts Kit 104937
7	1	Press. Plate Compl
8	2	1/4 Sems Screw
9	1	Spring Pack

#### \* REBUILD KIT 104939 FOR STANDARD FD-3 CONSISTS OF:

KEY NO.	QTY.	DESCRIPTION
—	1	Reline Kit 104938
10	1	Flange Nut
11	1	Ball Bearing
12	1	Spacer
13	1	Ball Bearing
14	1	Retaining Ring
15	1	Piston Housing
16	1	Piston Complete
17	1	Anti Rotation Spring
18	1	Lock Nut
19	2	Ball Bearing
20	1	Spacer
21	1	Retaining Ring
22	1	Retaining Ring
23	1	Lockwasher

\* Rebuild Kit 104940 for counter clockwise rotating fans.

#### \*\* REBUILD KIT 104941 FOR FD-3 WITH 2.56" PILOT DIAMETER CONSISTS OF:

KEY NO.	QTY.	DESCRIPTION
—	1	Reline Kit 104938
10	1	Slotted Nut
11	1	Washer
12	1	Spacer
13	2	Ball Bearing
14	1	Retaining Ring
15	1	Piston Housing
16	1	Piston Complete
17	1	Anti Rotation Spring
18	1	Locknut
19	2	Ball Bearing
20	1	Spacer
21	1	Retaining Ring
22	1	Retaining Ring
23	1	Lockwasher

\*\* Rebuild Kit 104942 for counter clockwise rotating fans.

The Bendix FD-L Fan Clutch is a pneumatically operated, thermostatically controlled clutch for the engine cooling fan. Its purpose is to maintain engine temperature by engaging or disengaging the cooling fan, thereby providing better fuel economy, greater engine efficiency, faster warmups and a quieter vehicle. Its fail-safe design prevents overheating in the event of component or air line failure.

The torque capacity of the FD-L (750 in-lbs) is considerably less than the FD-1 (882 in-lbs) and FD-3 (1100 in-lbs). Therefore the FD-L is not interchangeable with either the Bendix FD-1 or FD-3 fan clutch.

In addition the weight of the fan being mounted on the FD-L fan must not exceed 15 lbs.

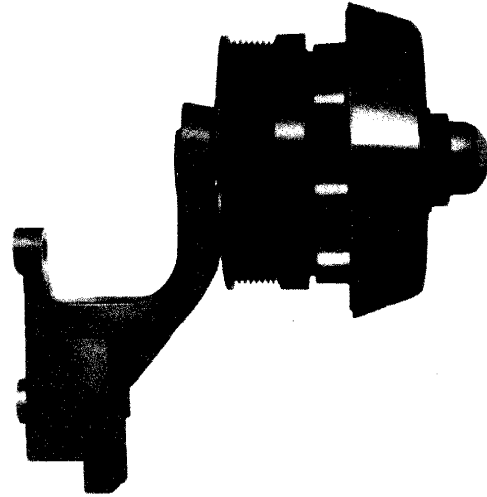
For Service/Maintenance information see Service Data Sheet SD-09-8505.

Weight - 34.5 Lbs.

VMRS No. - 42-003-013

Device Code - 8505

See Catalog Page 09-A-11 for Fan Clutch Control Valves, Control Kits and Accessories.



**CAUTION**

- Maximum fan drive torque capacity - 750 in-lbs.
- Maximum fan blade weight is 15 lbs.

**FD-L MINOR PARTS KIT 106733 CONSISTS OF:**

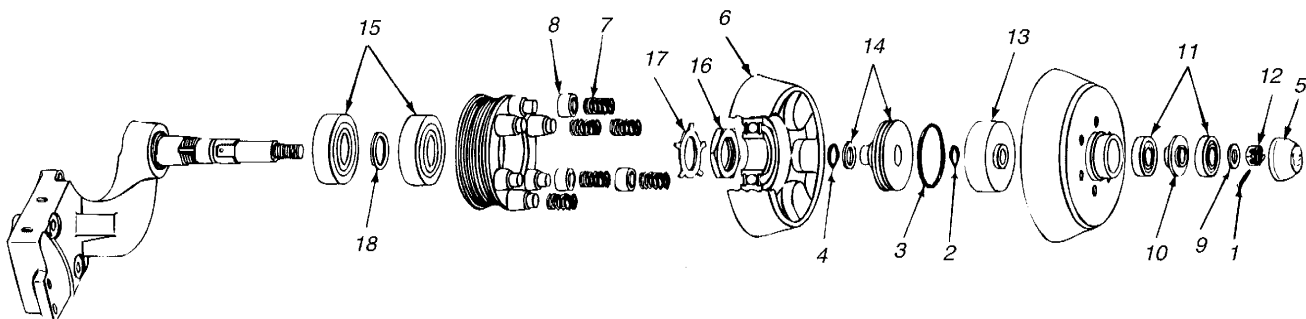
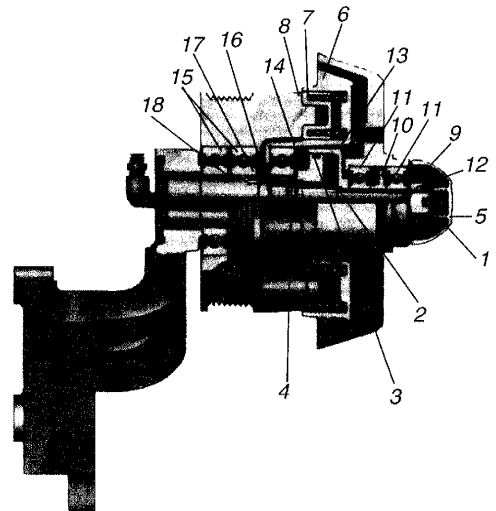
KEY NO.	QTY.	DESCRIPTION
1	1	Cotter Pin
2	1	O-Ring
3	1	O-Ring
4	1	O-Ring
5	1	Cap

**FD-L RELINE KIT 106733 CONSISTS OF:**

KEY NO.	QTY.	DESCRIPTION
—	1	Minor Parts Kit
6	1	Pressure Plate Complete
7	6	Spring
8	3	Isolator

**FD-L REBUILD KIT 106731 CONSISTS OF:**

KEY NO.	QTY.	DESCRIPTION
—	1	Reline Kit
9	1	Washer
10	1	Spacer
11	2	Ball Bearing
12	1	Hex Nut
13	1	Piston Housing
14	1	Piston Complete
15	2	Bearing
16	1	Hex Nut
17	1	Lockwasher
18	1	Spacer



# FAN CLUTCH CONTROL VALVES, CONTROL KITS AND ACCESSORIES

## CATALOG 09-A-11

### THERMO PNEUMATIC VALVES

Used on all fan clutch installations and controls the fan clutch. Closing temperature should be 10° higher than the engine thermostat (fully open position).

THERMO PNEUMATIC CONTROL VALVE PC. NO.	CLOSING TEMPERATURE (DEG. F)
289018	185
289019	190
289020	195
101329	200

VMRS NO. 42-003-13  
DEVICE CODE IS 8502



### MULTISTAT VALVES

Controls the fan clutch and shutters.

MULTISTAT VALVE PC. NO.	SHUTTER TEMPERATURE SETTING (DEG. F.)	FAN TEMPERATURE SETTING (DEG. F.)
102133	185	190
102134	190	195
102135	195	200

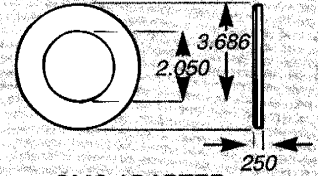
VMRS NO. 42-003-13  
DEVICE CODE IS 8502



### GMC ADAPTER

Used only on GMC vehicles and included in fan clutch assemblies where required. Adapts the GMC fan to either the fan clutch or spacers.

For FD-1 and FD-2 only.



GMC ADAPTER  
PC. NO. 292309

### AIR CONDITIONING INTERLOCK (OVERRIDE) INSTALLATION KITS

Used in addition to the thermo pneumatic control valves on vehicles with radiator mounted air conditioning condensers. Kit contains all necessary parts (except wiring, tubing and fittings) to complete installation.

KIT PC. NO.	TAP LINE VALVE	SOLENOID VALVE	PRESSURE SWITCH	FOR LINE SIZE	INSTRUCTION SHEET NO.
209771	289021	289023	289025	1/2" & 3/8"	BWS-591
209800	289608	289023	289025	5/8"	BWS-591
209806	292932*	289023	289025	REC/Dryer	BWS-591

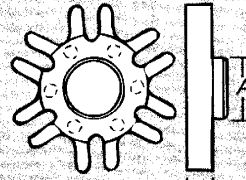
\*Special fitting for mounting switch 289025 is Dryer-Receiver.

DEV. CODE 3094

### FAN SPACERS

Fan spacers are used to position the fan the proper distance between the engine and radiator. Spacers are included in Fan Clutch Kits as required, and are available as service parts. The maximum permissible fan overhang (stack up of spacers) is 1-1/2".

Can be used on FD-1, FD-2 and Standard FD-3 only.



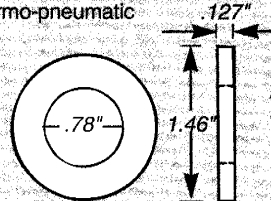
FAN SPACER PC. NO.	A DIMENSION	B DIMENSION
292310	1.998" (50.74mm)	.50" (12.7mm)
292311	1.998" (50.74mm)	.75" (19.05mm)
292312	2.051" (52.10mm)	.50" (12.7mm)
292313	2.051" (52.10mm)	.75" (19.05mm)
297912	2.560" (65.02mm)	.50" (12.7mm)
297913	2.560" (65.02mm)	.75" (19.05mm)

DEV. CODE 0145 & 0172

### FD-1 FAN CLUTCH ONLY SPECIAL WASHER PC. NO. 294182

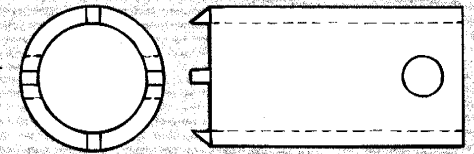
Special washer 294182, shown below, will fit all FD-1 fan clutches and may be used in installations where engagement noise has been objectionable and it has been determined the thermo-pneumatic control is functioning properly.

Before installing the washer, the fan clutch pressure plate should be inspected for friction material "glazing". If this condition is found, the pressure plate should either be replaced with a new unit or the "glazing" remove with sandpaper.



DEV. CODE 0145

DEV. CODE 0145



### FD-1 FAN CLUTCH ONLY SPANNER WRENCH PC. NO. 294514:

This wrench is used to remove the bearing nut when service of the rear bearings is required. (Service procedure outlined on Page 5. Service Data Sheet SD-09-1')

## FAN CLUTCH CONTROL SYSTEM COMPONENTS

How to select the correct components:

After selecting the proper fan clutch, please refer to list below for selection of necessary control components.

VEHICLE EQUIPPED WITH:	COMPONENTS REQUIRED	REFERENCE
No shutters No air conditioning (radiator mtd.)	<ul style="list-style-type: none"> <li>Select thermo-pneumatic valve with temperature setting 10°F. higher than engine thermostat (fully open position).</li> </ul>	Refer to control valves and air conditioning override kit listed above
Shutters	<ul style="list-style-type: none"> <li>Select thermo-pneumatic valve with temperature setting 10°F. higher than existing shutter control valve, or engine thermostat temperature (fully open), whichever is higher or use a multistat control valve to control both shutters and fan clutch.</li> </ul>	
Air conditioning (radiator mtd.)	<ul style="list-style-type: none"> <li>Select thermo-pneumatic valve with temperature setting 10°F. higher than engine thermostat (fully open position).</li> <li>Install air conditioning interlock (override) kit.</li> </ul>	
Shutters Air conditioning (radiator mtd.)	<ul style="list-style-type: none"> <li>Select thermo-pneumatic valve with temperature setting 10°F. higher than existing shutter control valve, or engine thermostat temperature (fully open), whichever is higher or use a multistat control valve to control both shutters and fan clutch.</li> <li>Install air condition interlock (override) kit.</li> </ul>	

NOTE: It is recommended that the radiator shutters be open when fan clutch is engaged. Most vehicles are equipped with an interlock that will open shutters when the air conditioning is turned on. Vehicles not so equipped will require an additional solenoid valve (289023). See installation instructions for complete details.

For Fan Clutch maintenance kit and service part information refer to Catalog Section 09-A-3 thru 09-A-6.

SEE NOTE 5 PAGE 09-C-1

**EVANS TO BENDIX**

Evans	Bendix Number	Evans	Bendix Number	Evans	Bendix Number	Evans	Bendix Number	Evans	Bendix Number
FC212005	104880	FC212070	104870	FC212082	104871	FC212090	104903	FC212117	104873
FC212005	104884	FC212070	288636	FC212082	288615	FC212091	104877	FC212118	104883
FC212020	104875	FC212071	104904	FC212083	104761	FC212092	104875	FC212118	104886
FC212065	104900	FC212072	104767	FC212083	104872	FC212092	104877	FC212119	104873
FC212066	108817	FC212072	104870	FC212083	288626	FC212101	102666	FC212120	104782
FC212067	104767	FC212072	288636	FC212084	104871	FC212102	102666	FC212121	104782
FC212067	104870	FC212074	104887	FC212084	288615	FC212105	102666	FC212121	104875
FC212067	288633	FC212075	104889	FC212085	104761	FC212106	102666	FC212124	104891
FC212068	104767	FC212079	104871	FC212085	104872	FC212113	104873	FC212125	104892
FC212068	104870	FC212079	288614	FC212085	288626	FC212114	104884	FC212126	104892
FC212068	288636	FC212080	104871	FC212086	104761	FC212114	104885	FC212127	104892
FC212069	104767	FC212080	288615	FC212086	104872	FC212115	104782	FC212128	104892
FC212069	104870	FC212081	104761	FC212086	288626	FC212115	104875	FC212133	104918
FC212069	288636	FC212081	104872	FC212087	104878	FC212116	104884	FC212136	104899
FC212070	104767	FC212081	288623	FC212089	104770	FC212116	104885		

**EVANS CHANGEOVER INFORMATION  
EVANS ON/OFF AIR OPERATED**

Required mechanical (spring) force to disengage, air pressure to engage. Fan will not engage if loss of air occurs.

**OPTION 1 — REUSE EXISTING CONTROL SYSTEM**

- (A) If Evans system utilizes a thermo pneumatic valve, the valve must be replaced. Refer to page 09-A-11 of this catalog for Bendix piece numbers.
- (B) If system utilizes a thermal electrical switch and solenoid valve, the piping to the solenoid valve must be changed so that the valve is open with no power and the engine cold. If this cannot be done, replace the valve with a normally open valve, such as Skinner No. C5C110.

SEE NOTE 5 PAGE 09-C-1

**OPTION 2 — CHANGE THE CONTROL SYSTEM**

Remove the thermal electrical switch and solenoid valve. Replace with a Bendix thermo pneumatic control valve. Refer to page 09-A-11 of this catalog for Bendix piece numbers.

**NOTE: Vehicles equipped with air conditioning  
Install Bendix air conditioning override kit; see catalog page 09-A-11.**

**HORTON TO BENDIX**

Horton	Bendix Number	Horton	Bendix Number	Horton	Bendix Number	Horton	Bendix Number	Horton	Bendix Number
590000	104872	990005	104965	990031	104782	990062	104905	991049	107889
590001	104878	990006	106272	990032	104886	990063	104870	991068	104905
590002	104871	990008	106272	990034	104782	990066	104897	991072	108464
590003	104886	990011	104877	990039	104764	990070	104905	991073	108378
590004	104885	990012	104872	990042	104899	990076	104870	991075	107480
590005	104767	990013	104872	990043	104892	991000	104965	991079	104870
590006	107480	990014	104872	990044	104892	991008	106291	991080	107878
590007	104905	990019	104770	990047	104884	991009	107480	991080	107941
590008	104770	990023	104878	990048	104884	991012	104905	991081	104965
591001	104965	990026	104871	990049	104883	991013	104965	991922	107147
591004	104735	990027	287847	990057	104901	991017	104905		
990003	104965	990028	104898	990058	104870	991035	104870		
990004	104965	990030	104886	990060	104870	991049	106969		

# COMPETITIVE CHANGEOVER INFORMATION

## FAN CLUTCH

## CATALOG 09-A-13

### HORTON CHANGEOVER INFORMATION

#### HORTON ON/OFF AIR OPERATED

Required mechanical (spring) force to disengage, air pressure to engage. Fan will not engage if loss of air occurs.

#### OPTION 1 — REUSE EXISTING CONTROL SYSTEM

- (A) If Horton system utilizes a thermo pneumatic valve, the valve must be replaced. Use Bendix thermo pneumatic control valve. Refer to page 09-A-11 of this catalog for Bendix piece numbers.
- (B) If system utilizes a thermal electrical switch and solenoid valve, the piping to the solenoid valve must be changed so that the valve is open with no power and the engine cold. If this cannot be done, replace the valve with a normally open valve; such as Skinner No. C5C110.

#### OPTION 2 — CHANGE THE CONTROL SYSTEM

Remove the thermal electrical switch and solenoid valve. Replace with a Bendix thermo pneumatic control valve. Refer to page 09-A-11 of this catalog for Bendix piece numbers.

**NOTE: Vehicles equipped with air conditioning  
Install Bendix air conditioning override kit; see catalog page 09-A-11.**

## ROCKFORD TO BENDIX

Rockford	Bendix Number	Rockford	Bendix Number	Rockford	Bendix Number	Rockford	Bendix Number	Rockford	Bendix Number
22017	104899	24153	104870	24636	104874	25388	104894	50048	104750
23754	104905	24175	104782	24636	104876	26178	104764	50051	104965
23780	104893	24187	104770	24731	104901	26895	104875	50071	104750
23816	104889	24281	104764	24745	104901	50006	104905		
24111	104875	24562	104871	24835	104900	50010	104764		

### ROCKFORD CHANGEOVER INFORMATION MODULATED ON/OFF, AIR OPERATED

On-off type providing variable fan speeds dependent upon engine temperature. Requires air pressure to disengage, controlled by a thermo pneumatic control valve. It is unique in that it utilizes engine oil to cool and lubricate the fan drive.

The thermo pneumatic control valve used in the Rockford system is a modulating type control valve and is not compatible with the Bendix Fan Clutch. It must be discarded and replaced with components described in either options 1 or 2.

#### OPTION 1 — INSTALL THERMO PNEUMATIC CONTROL VALVE

Install Bendix thermo pneumatic control valve into engine water jacket. Refer to page 09-A-11 of this catalog for Bendix piece numbers.

#### OPTION 2 — INSTALL ELECTRICAL CONTROL SYSTEM

Install thermal electrical switch into engine water jacket. Install solenoid valve, such as Skinner No. C5C110, and wire per manufacturer's instructions.

**NOTE: Vehicles equipped with air conditioning  
Install Bendix air conditioning override kit; see catalog page 09-A-11.**

SEE NOTE 5 PAGE 09-C-1

## SCHWITZER TO BENDIX

Schwitzer	Bendix Number	Schwitzer	Bendix Number	Schwitzer	Bendix Number	Schwitzer	Bendix Number	Schwitzer	Bendix Number
184228	104761	184675	104905	186164	104900	192576	104899	192615	104761
184228	104872	184841	104899	192573	104896	192577	104874	192615	104872
184229	104782	184842	104874	192574	104905	192583	104900	192618	104782
184582	104896								

### SCHWITZER VISCOUS SCHWITZER ON/OFF AIR OPERATED

Requires mechanical (spring) force to disengage, air pressure to engage. Fan will not engage if loss of air occurs.

#### OPTION 1 — REUSE EXISTING CONTROL SYSTEM

- (A) If system utilizes a thermo pneumatic valve, the valve must be replaced. Use Bendix thermo pneumatic control valve. Refer to page 09-A-11 of this catalog for Bendix piece numbers.
- (B) If system utilizes a thermal electrical switch and solenoid valve, the piping to the solenoid valve must be changed so that the valve is open with no power and the engine cold. If this cannot be done, replace the valve with a normally open valve; such as Skinner No. C5C110.

#### OPTION 2 — CHANGE THE CONTROL SYSTEM

Remove the thermal electrical switch and solenoid valve. Replace with a Bendix thermo pneumatic control valve. Refer to page 09-A-11 of this catalog for Bendix piece numbers.

**NOTE: Vehicles equipped with air conditioning  
Install Bendix air conditioning override kit; see catalog page 09-A-11.**

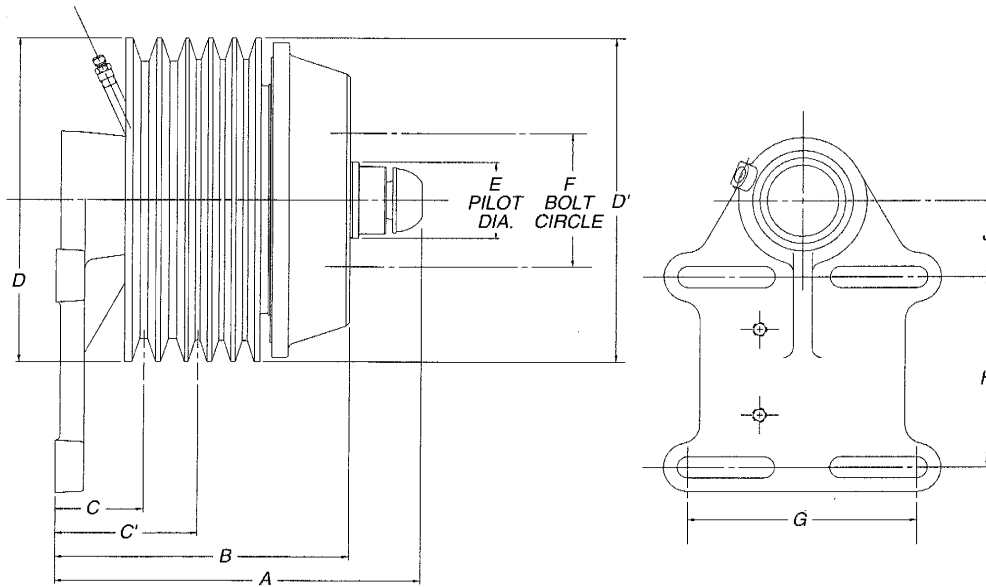
#### OPTION 1 — INSTALL THERMO PNEUMATIC CONTROL VALVE

Install Bendix thermo pneumatic control valve into engine water jacket. Refer to page 09-A-11 of this catalog for Bendix piece numbers.

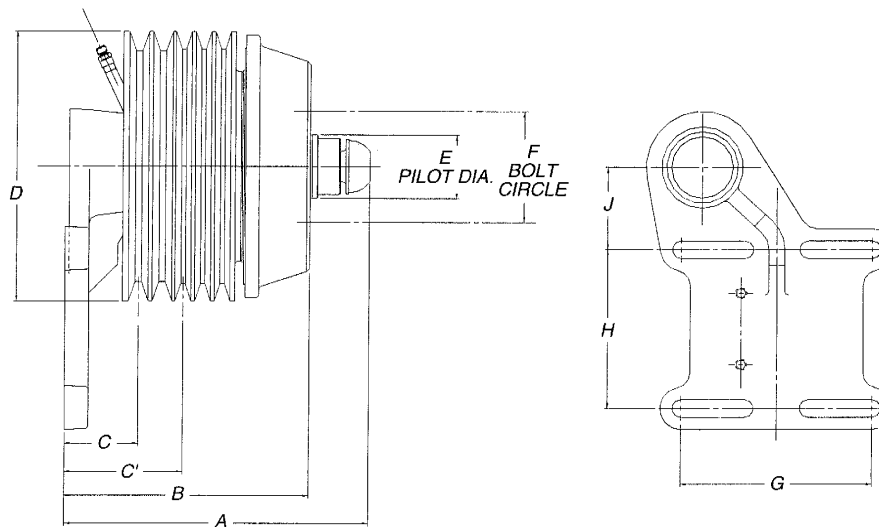
#### OPTION 2 — INSTALL ELECTRICAL CONTROL SYSTEM

Install thermal electrical switch into engine water jacket. Install solenoid valve, such as Skinner No. C5C110, and wire per manufacturer's instructions.

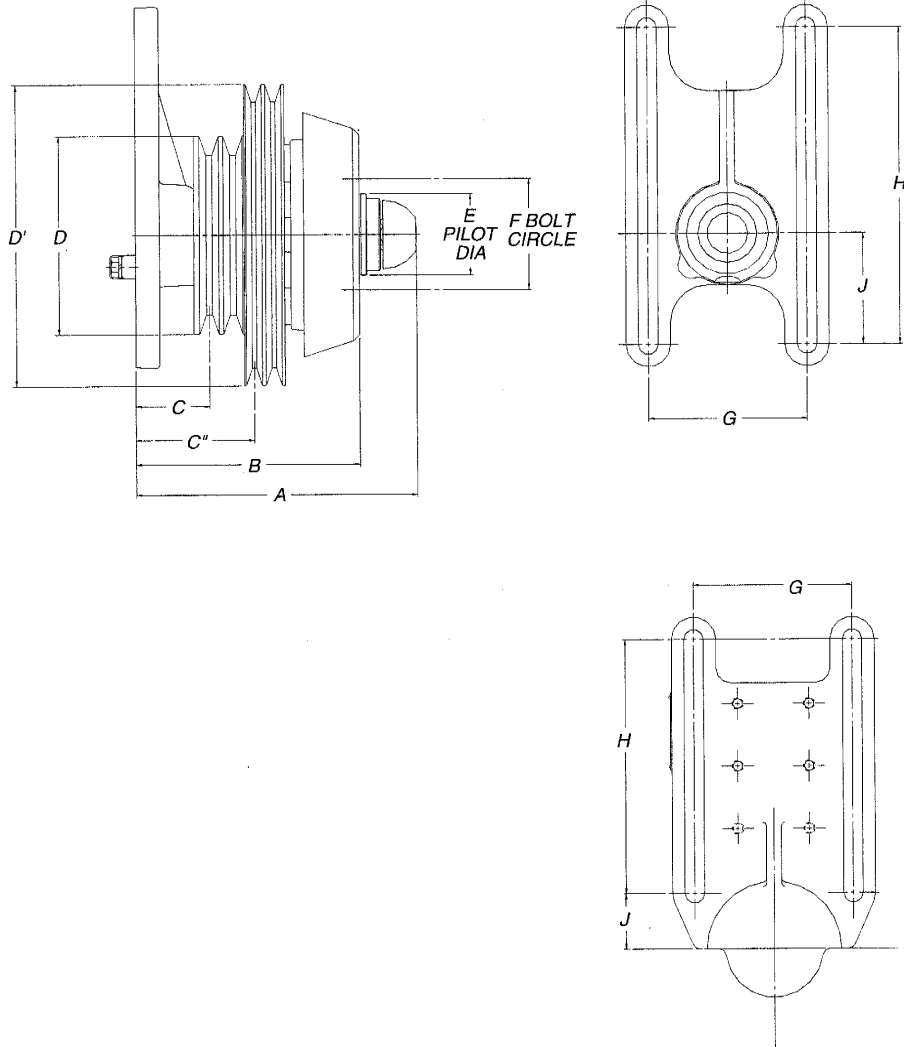
**NOTE: Vehicles equipped with air conditioning  
Install Bendix air conditioning override kit; see catalog page 09-A-11.**



O.E. Fan Clutch Pc.No.	Model	Service Replacement	A Length	B Length	C to first groove	C'	D pulley dia.	D' pulley dia.	E pilot dia.	F bolt circle (fan)	Bolt hole size	G Bracket	H Bracket	J Bracket	No. of pulley grooves
104758	FD-3	104758	9.61	7.72	2.31	3.72	8.50	-	1.998	3.50	3/8-16	6.00	5.00	2.00	5
104759	FD-3	104760	9.61	7.72	2.31	3.72	8.50	-	2.560	3.50	3/8-16	6.00	5.00	2.00	5
104988	FD-3	104990	9.61	7.72	2.31	3.72	7.50	-	2.560	3.50	3/8-16	6.00	5.00	2.00	5
106291	FD-3	106291	9.61	7.72	2.24	3.72	9.30	7.08	2.560	3.50	3/8-16	6.00	5.00	.97	4
106973	FD-L	106974	9.51	7.72	2.31	3.72	7.50	-	2.560	3.50	3/8-16	6.00	5.00	2.00	5
108462	FD-L	108463	9.51	7.72	2.31	3.72	7.50	5.46	2.560	3.50	3/8-16	6.00	5.00	2.00	Poly 10/3
108629	FD-L	108629	9.51	7.72	1.94	3.72	7.32	-	2.560	3.50	3/8-16	6.00	5.00	2.00	Poly 10/3

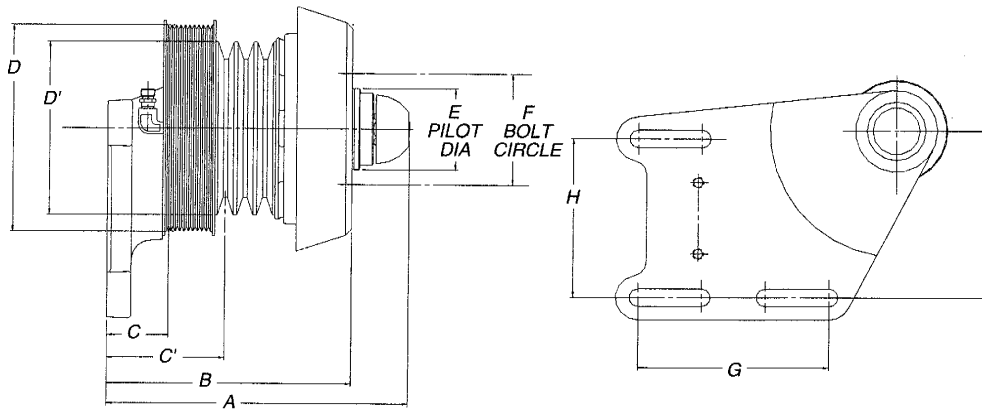


O.E. Fan Clutch Pc.No.	Model	Service Replacement	A Length	B Length	C to first groove	C'	D pulley dia.	E pilot dia.	F bolt circle (fan)	Bolt hole size	G Bracket	H Bracket	J Bracket	No. of pulley grooves
104779	FD-3	104779	9.61	7.72	2.31	3.72	8.50	1.998	3.50	3/8-16	6.00	5.00	2.60	5
104781	FD-3	104780	9.61	7.72	2.31	3.72	8.50	2.560	3.50	3/8-16	6.00	5.00	2.60	5

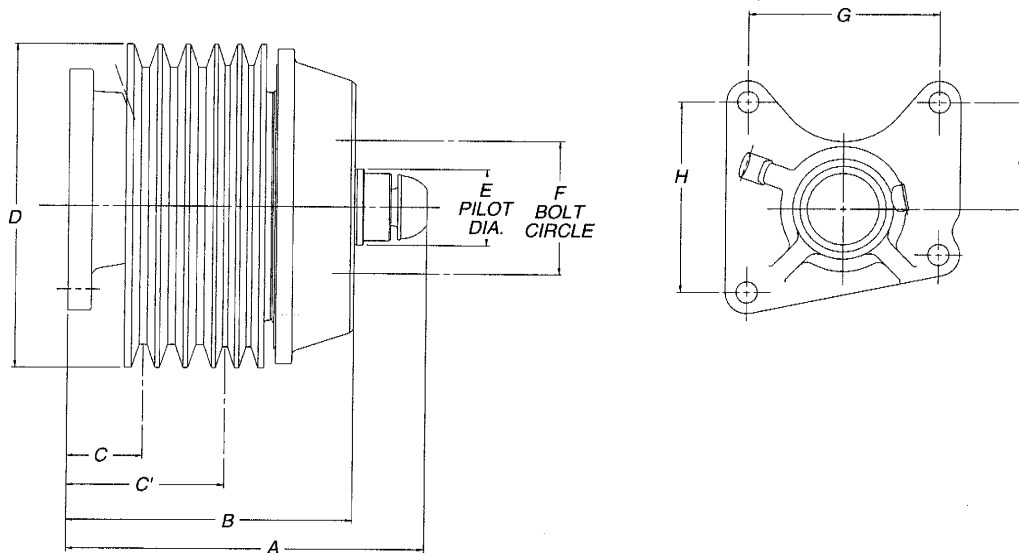


O.E. Fan Clutch Pc. No.	Model	Service Replacement	A Length	B Length	C to first groove	C'	D pulley dia.	D' pulley dia.	E pilot dia.	F bolt circle (fan)	Bolt hole size	G Bracket	H Bracket	J Bracket	No. of pulley grooves
104767	FD-3	104767	8.93	7.05	2.31	3.72	8.50	-	1.998	3.50	3/8-16	5.00	10.00	3.50	4
104769	FD-3	104768	8.93	7.05	2.31	3.72	8.50	-	2.560	3.50	3/8-16	5.00	10.00	3.50	4
104870	FD-3	104870	8.93	7.05	2.31	3.72	8.50	-	1.998	3.50	3/8-16	5.00	10.00	3.50	4
104905	FD-3	104905	8.93	7.05	2.31	3.72	7.50	-	1.998	3.50	3/8-16	5.00	10.00	3.50	4
104987	FD-3	104989	8.93	7.05	2.31	3.72	7.50	-	2.560	3.50	3/8-16	5.00	10.00	3.50	4
106091	FD-3	106091	8.93	7.05	2.31	3.72	8.50	-	2.560	3.50	3/8-16	5.00	10.00	3.50	4
106120	FD-3	106120	8.93	7.05	2.31	3.72	7.50	-	2.560	3.50	3/8-16	5.00	10.00	3.50	4
106235	FD-3	106235	8.93	7.05	2.31	3.72	7.50	-	2.560	3.50	3/8-16	5.00	10.00	3.50	4
106270	FD-3	106270	8.93	7.05	2.31	3.72	8.50	-	2.560	3.50	3/8-16	5.00	10.00	3.50	4
107480	FD-3	107480	8.93	7.05	2.31	3.72	8.50	-	1.998	3.50	3/8-16	5.00	8.00	1.75	4
107543	FD-L	107543	8.84	7.05	2.31	3.72	6.25	9.50	2.560	3.50	3/8-16	5.00	10.00	3.50	4
107544	FD-L	107544	8.85	7.05	2.31	3.72	7.50	9.50	2.560	3.50	3/8-16	5.00	10.00	3.50	4
108530	FD-L	108530	8.85	7.05	2.31	3.72	7.50	-	2.560	3.50	3/8-16	5.00	10.00	3.50	4
108531	FD-L	108531	8.85	7.05	2.31	3.72	6.25	-	2.560	3.50	3/8-16	5.00	10.00	3.50	4
108817	FD-3	108817	8.93	7.05	2.56	-	9.75	-	1.998	3.50	3/8-16	5.00	10.00	3.50	2
108893	FD-L	108893	8.85	7.05	2.31	3.72	8.50	-	2.560	3.50	3/8-16	5.00	10.00	3.50	4
288636	FD-1	288636	8.89	7.30	2.31	3.72	8.50	-	1.998	3.50	3/8-16	5.00	10.00	3.50	4

T- incorporates a tensioning bridge  
\* see additional view

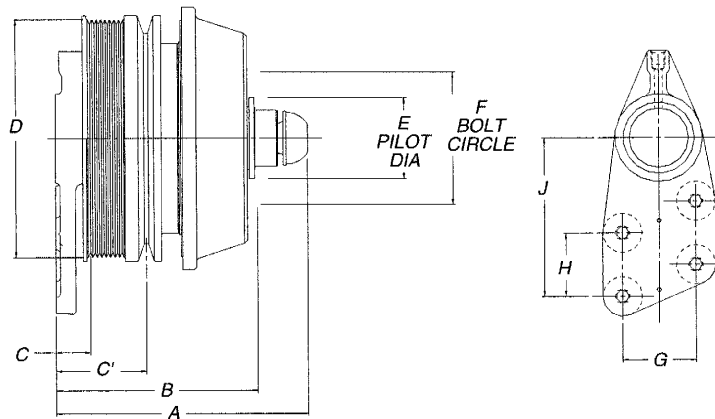


O.E. Fan Clutch Pc.No.	Model	Service Replacement	A Length	B Length	C to first groove	C'	D pulley dia.	D' pulley dia.	E pilot dia.	F bolt circle (fan)	Bolt hole size	G Bracket	H Bracket	J Bracket	No. of pulley grooves
108432	FD-L	108464	9.51	7.72	1.94	3.92	6.51	3.72	2.560	3.50	3/8-16	6.00	5.00	5.26	Poly 10 3

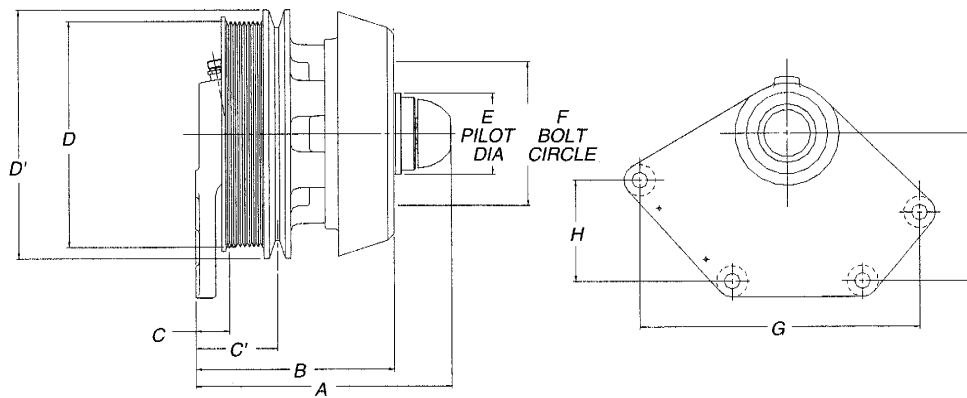


O.E. Fan Clutch Pc.No.	Model	Service Replacement	A Length	B Length	C to first groove	C'	D pulley dia.	E pilot dia.	F bolt circle (fan)	Bolt hole size	G Bracket	H Bracket	J Bracket	No. of pulley grooves
104889	FD-3	104889	9.42	7.54	2.00	4.16	8.50	1.998	3.50	3/8-16	5.00	5.00	2.81	5

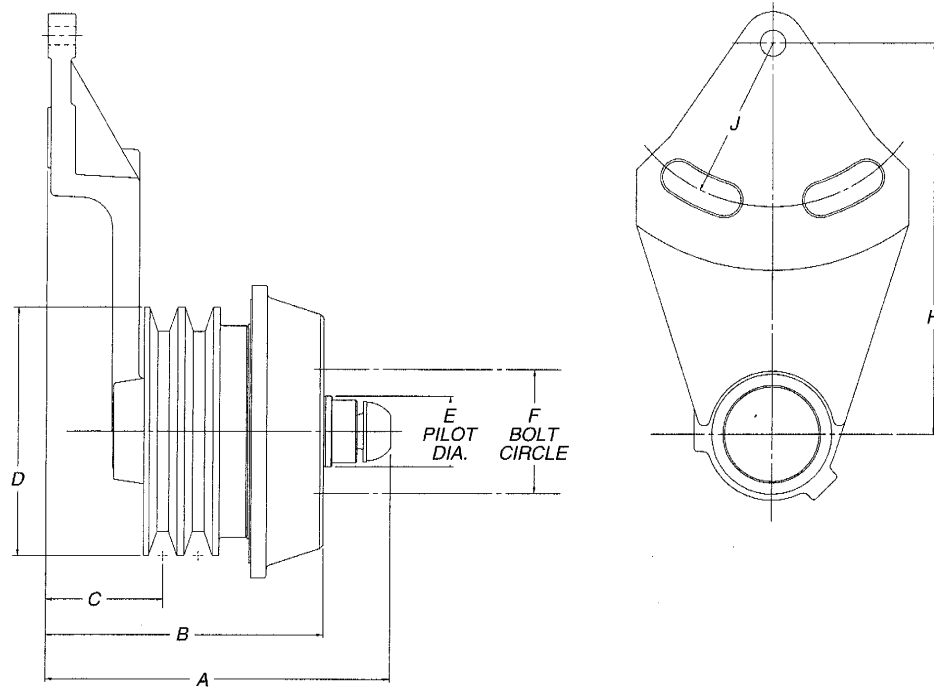




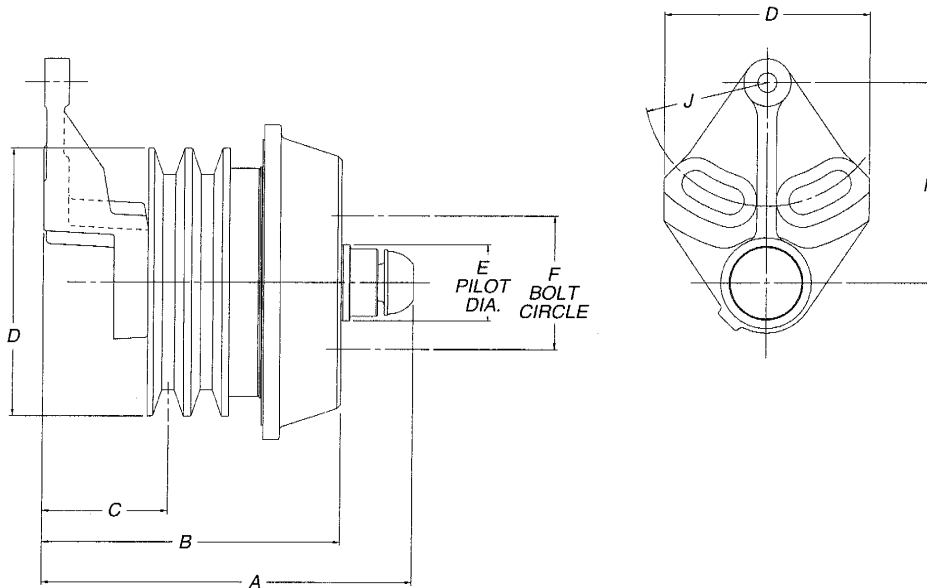
O.E. Fan Clutch Pc.No.	Model	Service Replacement	A Length	B Length	C to first groove	C'	D pulley dia.	D' pulley dia.	E pilot dia.	F bolt circle (fan)	Bolt hole size	G Bracket	H Bracket	J Bracket	No. of pulley grooves
107147	FD-3	107147	7.91	6.34	1.08	2.84	7.50	7.75	2.560	3.50	3/8-16	2.32	2.00	5.00	Poly 8 1
108497	FD-L	108497	7.83	6.04	1.08	-	7.50	9.05	2.560	3.50	3/8-16	2.32	2.00	5.00	Poly 8 1
108532	FD-L	108532	7.83	6.04	1.08	-	6.25	9.05	2.560	3.50	3/8-16	2.32	2.00	5.00	Poly 8 1



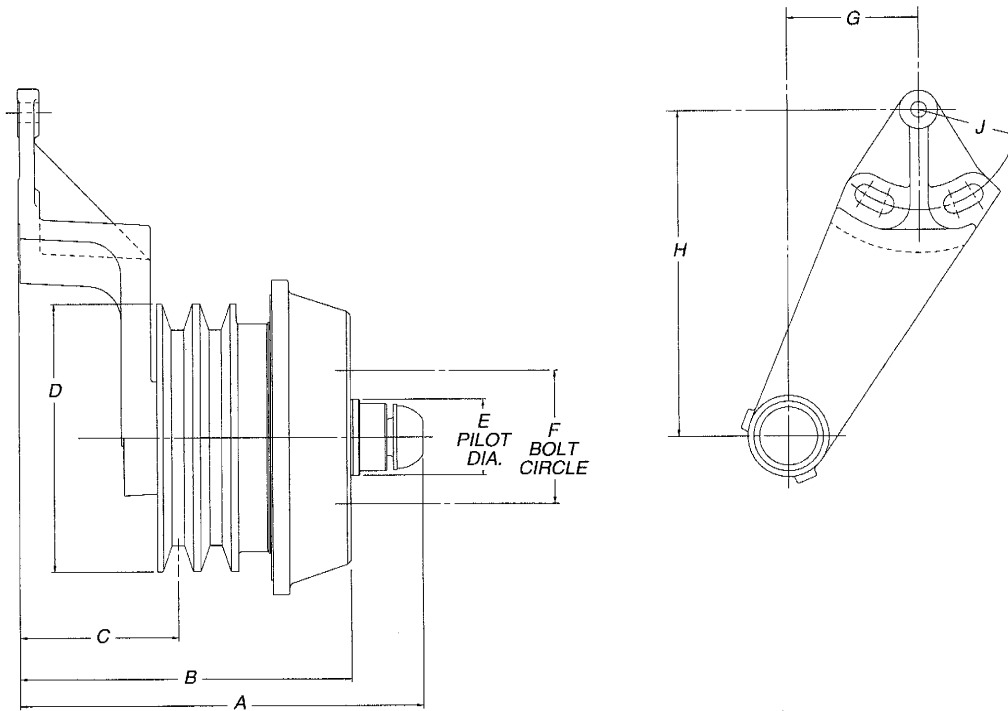
O.E. Fan Clutch Pc.No.	Model	Service Replacement	A Length	B Length	C to first groove	C'	D pulley dia.	D' pulley dia.	E pilot dia.	F bolt circle (fan)	Bolt hole size	G Bracket	H Bracket	J Bracket	No. of pulley grooves
107900	FD-L	107901	8.02	6.23	1.05	2.57	7.12	7.83	2.560	3.50	3/8-16	8.80	3.19	4.66	Poly 8 1



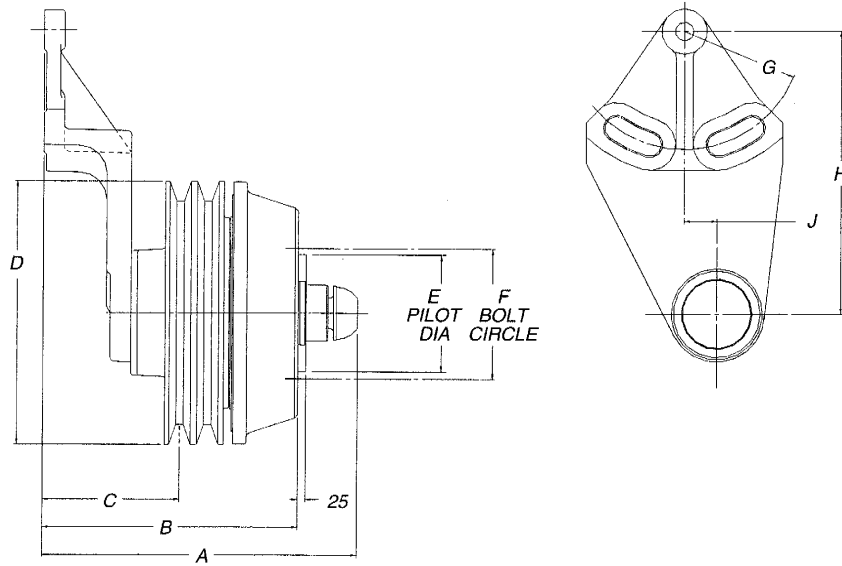
O.E. Fan Clutch Pc.No.	Model	Service Replacement	A Length	B Length	C to first groove	D pulley dia.	E pilot dia.	F bolt circle (fan)	Bolt hole size	H Bracket	J Bracket	No. of pulley grooves (Width)
104725	FD-3	104725	9.73	7.85	3.31	7.03	1.998	3.50	3/8-16	11.05	3.24	2(.80)
104735	FD-3	104735	9.73	7.85	3.31	6.38	1.998	3.50	3/8-16	11.05	3.24	2(.80)
104877	FD-3	104877	9.73	7.85	3.31	7.03	1.998	3.50	3/8-16	7.75	3.24	2(.80)
104904	FD-3	104904	9.94	8.06	4.33	7.50	1.998	3.50	3/8-16	10.05	3.24	2(.67)
107542	FD-L	107542	9.68	7.89	3.35	5.88	2.560	3.50	3/8-16	6.50	3.22	2(.80)
108006	FD-3	108006	9.70	8.15	3.31	7.03	2.560	3.50	3/8-16	7.75	3.24	2(.80)



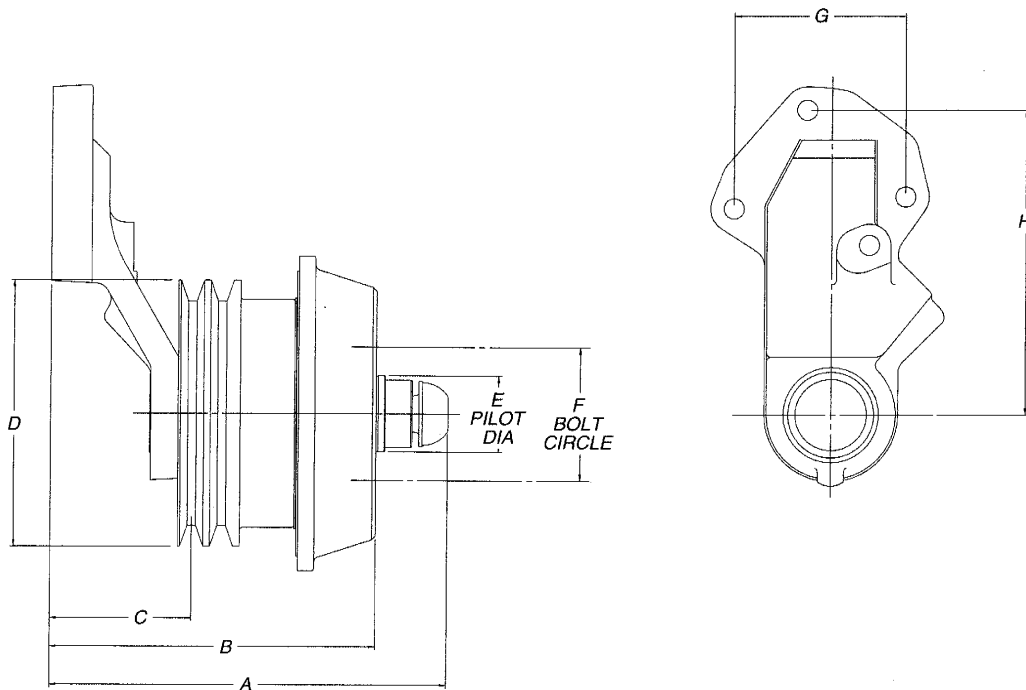
O.E. Fan Clutch Pc.No.	Model	Service Replacement	A Length	B Length	C to first groove	D pulley dia.	E pilot dia.	F bolt circle (fan)	Bolt hole size	H Bracket	J Bracket	No. of pulley grooves
102532	FD-1	102532	9.31	7.71	3.31	8.18	1.998	3.50	3/8-16	5.25	3.24	2
104878	FD-3	104878	9.73	7.85	3.31	7.03	1.998	3.50	3/8-16	5.25	3.24	2



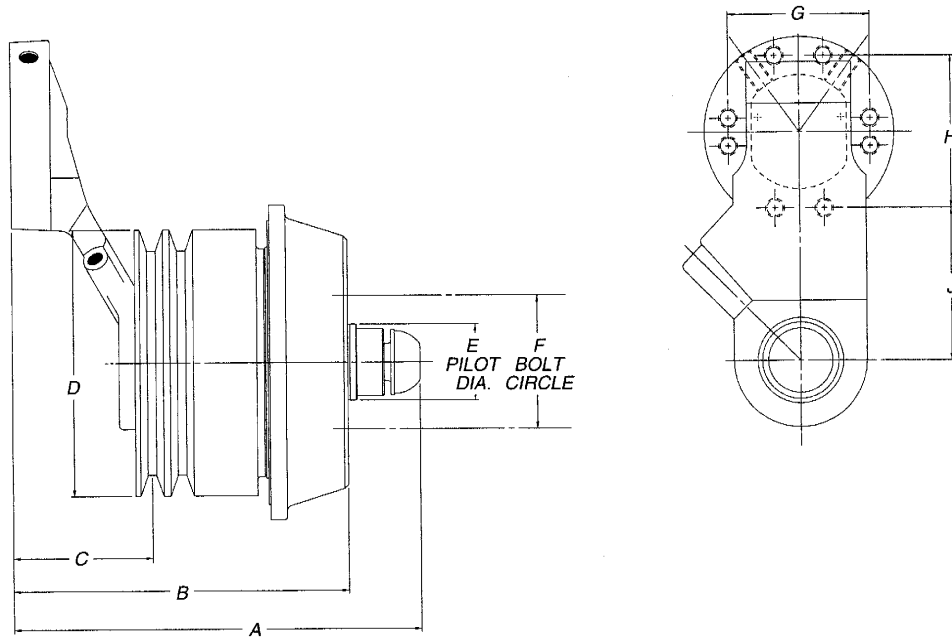
O.E. Fan Clutch Pc.No.	Model	Service Replacement	A Length	B Length	C to first groove	D pulley dia.	E pilot dia.	F bolt circle (fan)	Bolt hole size	G Bracket	H Bracket	J Bracket	No. of pulley grooves
104879	FD-3	104879	10.58	8.69	4.16	7.04	1.998	3.50	3/8-16	5.00	8.56	3.24	2
104880	FD-3	104880	10.58	8.69	4.16	8.18	1.998	3.50	3/8-16	4.25	10.50	3.24	2
104881	FD-3	104881	10.58	8.69	4.16	7.04	1.998	3.50	3/8-16	5.00	8.56	3.24	2
104882	FD-3	104882	10.58	8.69	4.16	8.18	1.998	3.50	3/8-16	4.25	10.50	3.24	2
106093	FD-3	106093	10.58	8.69	4.16	7.04	2.560	3.50	3/8-16	5.00	8.56	3.24	2
106096	FD-3	106096	10.58	8.69	4.16	8.18	2.560	3.50	3/8-16	4.25	10.50	3.24	2
106098	FD-3	106098	10.58	8.69	4.16	7.04	2.560	3.50	3/8-16	4.25	10.50	3.24	2



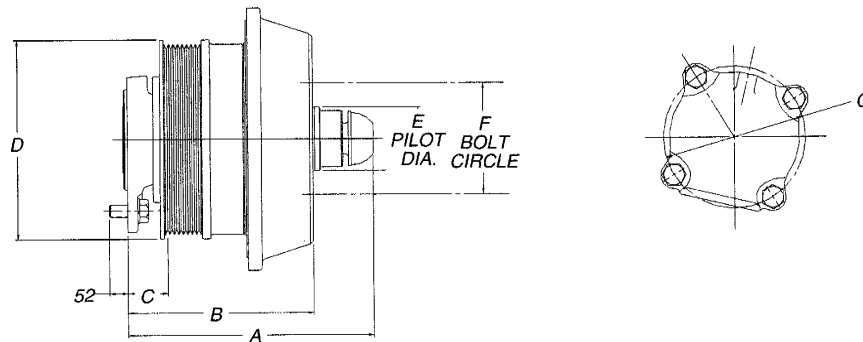
O.E. Fan Clutch Pc.No.	Model	Service Replacement	A Length	B Length	C to first groove	D pulley dia.	E pilot dia.	F bolt circle (fan)	Bolt hole size	G Bracket	H Bracket	J Bracket	No. of pulley grooves
104896	FD-3	104896	9.94	8.06	4.33	8.30	3.685	4.63	3/8-16	3.24	8.91	.75	2



O.E. Fan Clutch Pc.No.	Model	Service Replacement	A Length	B Length	C to first groove	D pulley dia.	E pilot dia.	F bolt circle (fan)	Bolt hole size	G Bracket	H Bracket	No. of pulley grooves
104750	FD-3	104750	10.45	8.57	3.72	7.00	1.998	3.50	3/8-16	4.49	8.00	2
104751	FD-3	104751	10.45	8.57	3.72	6.25	1.998	3.50	3/8-16	4.49	8.00	2
104752	FD-3	104756	10.45	8.57	3.72	7.00	2.560	3.50	3/8-16	4.49	8.00	2
104753	FD-3	104757	10.45	8.57	3.72	6.25	2.560	3.50	3/8-16	4.49	8.00	2



O.E. Fan Clutch Pc.No.	Model	Service Replacement	A Length	B Length	C to first groove	D pulley dia.	E pilot dia.	F bolt circle (fan)	Bolt hole size	G Bracket	H Bracket	J Bracket	No. of pulley grooves
104770	FD-3	104770	10.68	8.80	3.66	7.00	1.998	3.50	3/8-16	3.73	4.0	4.0	2
104771	FD-3	104772	10.68	8.80	3.66	7.00	2.560	3.50	3/8-16	3.73	4.0	4.0	2

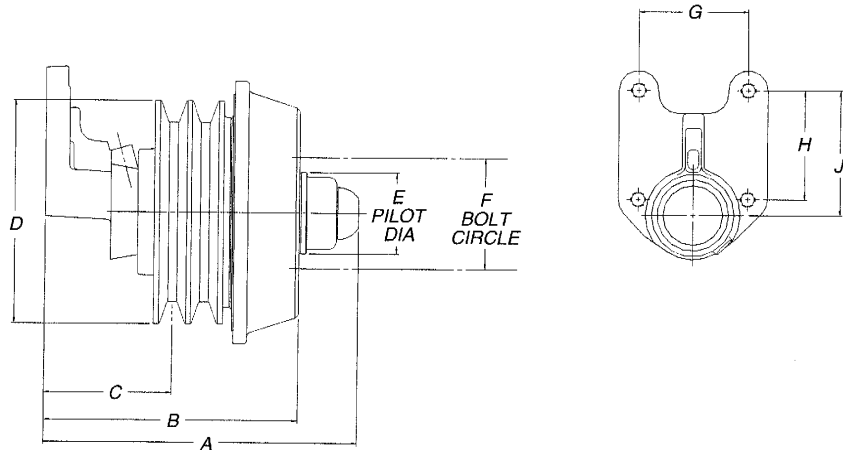


O.E. Fan Clutch Pc.No.	Model	Service Replacement	A Length	B Length	C to first groove	D pulley dia.	E pilot dia.	F bolt circle (fan)	Bolt hole size	G Bracket	No. of pulley grooves
104902	FD-3	104902	7.71	5.83	1.39	5.98	1.998	3.50	3/8-16	4.49	Poly 8
104903	FD-3	104903	7.71	5.83	1.39	5.98	1.998	3.50	3/8-16	4.49	Poly 8
104965	FD-3	104965	7.71	5.83	1.25	6.51	1.998	3.50	3/8-16	4.49	Poly 8
104981	FD-3	104981	7.71	5.83	1.25	5.50	2.560	3.50	3/8-16	4.49	Poly 8
106099	FD-3	106099	7.71	5.83	1.25	5.50	2.560	3.50	3/8-16	4.49	Poly 8
106236	FD-3	106236	7.71	5.83	1.25	6.51	2.560	3.50	3/8-16	4.49	Poly 8
106272	FD-3	106272	7.71	5.83	1.25	5.98	2.560	3.50	3/8-16	4.49	Poly 8
107580	FD-3	107580	7.71	5.83	1.25	6.51	1.998	3.50	3/8-16	4.49	Poly 10
107940	FD-3	107940	7.71	5.83	1.25	6.51	1.998	3.50	3/8-16	4.49	Poly 10
107970	FD-3	107970	7.71	6.51	1.83	6.51	1.998	3.50	3/8-16	4.49	Poly 10
108323	FD-3	108323	7.71	5.83	1.83	6.51	1.998	3.50	3/8-16	4.49	Poly 10
108552	FD-L	108552	7.00	5.21	1.27	5.00	2.560	3.50	3/8-16	4.49	Poly 8
108553	FD-L	108553	7.00	5.21	1.27	5.98	2.560	3.50	3/8-16	4.49	Poly 8

ccw

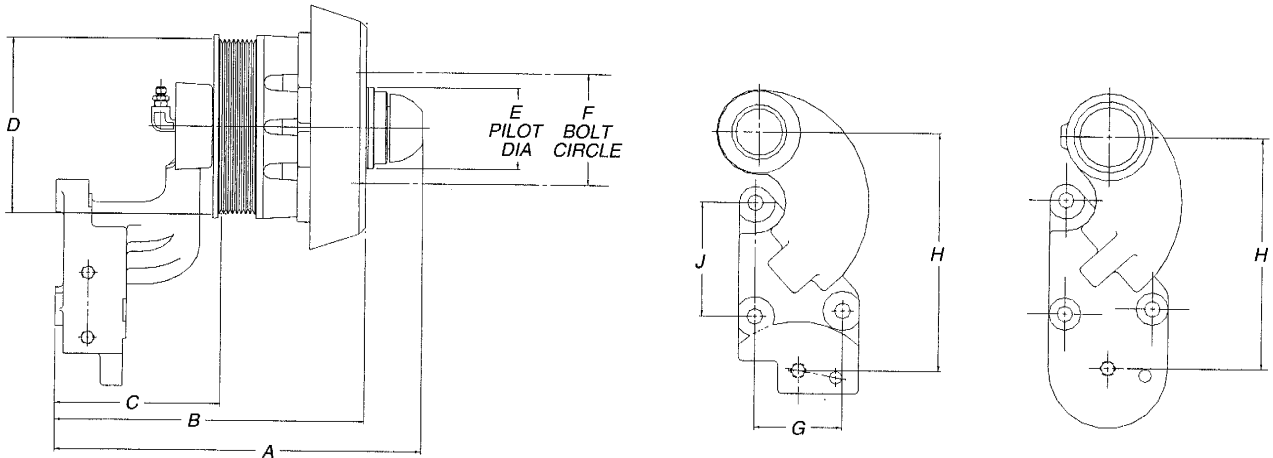
ccw

ccw - counter clockwise rotation

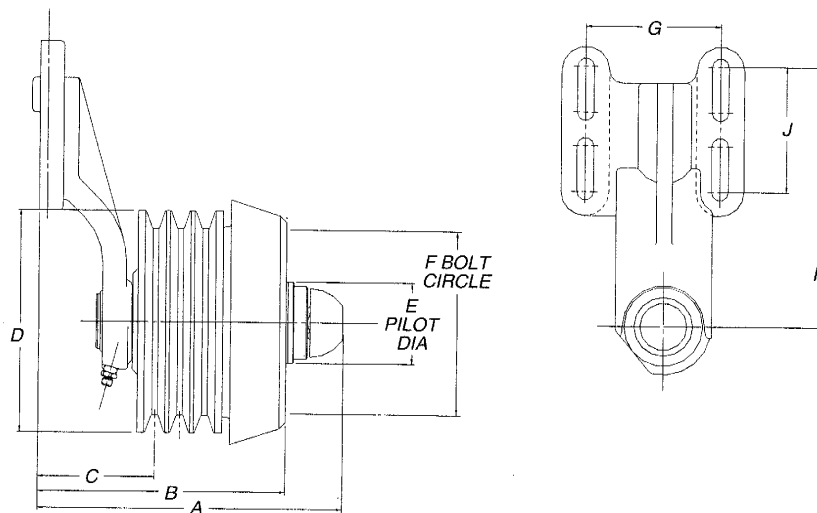


O.E. Fan Clutch Pc.No.	Model	Service Replacement	A Length	B Length	C to first groove	C'	D pulley dia.	E pilot dia.	F bolt circle (fan)	Bolt hole size	G Bracket	H Bracket	J Bracket	No. of pulley grooves (width)
102666	FD-1	102666	9.27	7.67	1.59	-	8.00	1.998	3.50	3/8-16	3.44	3.44	3.94	6(.52)
104761	FD-3	104761	9.88	8.00	3.03	-	7.03	1.998	3.50	3/8-16	3.44	3.44	3.94	2(.80)
104763	FD-3	104762	9.88	8.00	3.03	-	7.03	2.560	3.50	3/8-16	3.44	3.44	3.94	2(.80)
104871	FD-3	104871	8.87	6.98	3.03	-	8.18	1.998	3.50	3/8-16	3.44	3.44	3.94	2(.80)
104872	FD-3	104872	8.87	6.98	3.03	-	7.03	1.998	3.50	3/8-16	3.44	3.44	3.94	2(.80)
104895	FD-3	104894	9.88	8.00	3.00	-	8.18	1.998	3.50	3/8-16	3.44	3.44	3.94	1(.61) 2(.80)
104898	FD-3	104898	10.67	8.78	5.06	-	9.31	3.685	4.63	3/8-16	3.44	3.44	3.94	2(.67)
106097	FD-3	106097	9.88	8.00	4.02	-	7.03	2.560	3.50	3/8-16	3.44	3.44	3.94	2(.80)
106237	FD-3	106876	8.87	6.98	4.02	-	8.18	2.560	3.50	3/8-16	3.44	3.44	3.94	2(.80)
106238	FD-3	106350	8.87	6.98	4.02	-	7.03	2.560	3.50	3/8-16	3.44	3.44	3.94	2(.80)
106350	FD-3	106350	8.87	7.29	3.03	-	7.03	2.560	3.50	3/8-16	3.44	3.44	3.94	2(.80)
106450	FD-3	106450	9.88	8.00	4.02	-	7.03	2.560	3.50	3/8-16	3.44	2.58	3.94	2(.80)
106844	FD-3	106844	8.87	6.98	3.03	-	7.03	1.998	3.50	3/8-16	3.44	3.44	3.94	2(.80)
106876	FD-3	106876	8.87	7.29	3.03	-	8.18	2.560	3.50	3/8-16	3.44	3.44	3.94	2(.80)
108696	FD-L	108696	8.78	6.98	3.03	-	7.04	2.560	3.50	3/8-16	3.44	2.58	3.94	2(.80)
108697	FD-L	108697	8.78	6.98	3.03	-	5.75	2.560	3.50	3/8-16	3.44	2.58	3.94	2(.80)
287847	FD-1	104894	9.47	7.86	3.00	4.02	8.18	1.998	3.50	3/8-16	3.44	3.44	3.94	1(.62) 2(.80)
288615	FD-1	104871	8.82	7.23	3.03	-	8.18	1.998	3.50	3/8-16	3.44	3.44	3.94	2(.80)
288626	FD-1	104872	8.45	6.85	3.03	-	7.03	1.998	3.50	3/8-16	3.44	3.44	3.94	2(.80)

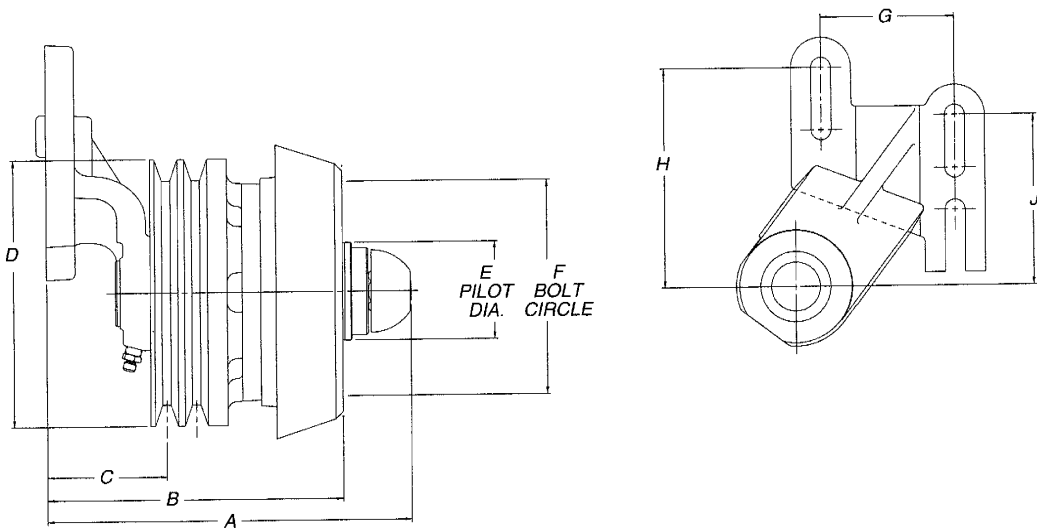
\* Thru hole mounting bracket



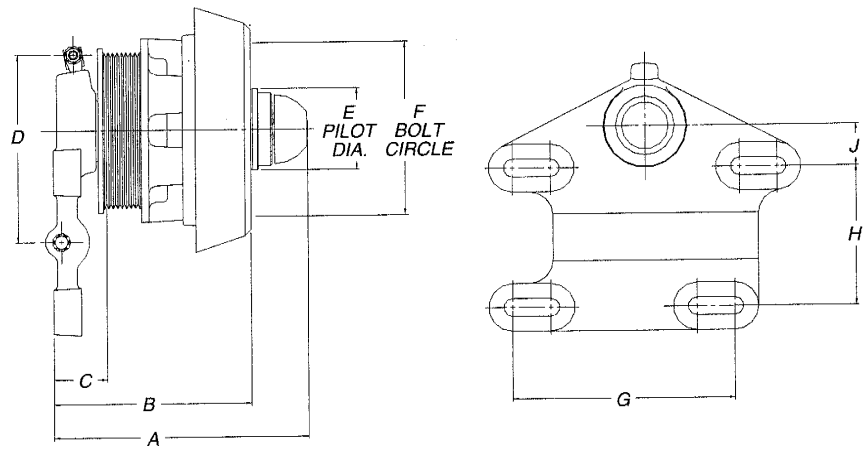
O.E. Fan Clutch Pc.No.	Model	Service Replacement	A Length	B Length	C to first groove	D pulley dia.	E pilot dia.	F bolt circle (fan)	Bolt hole size	G Bracket	H Bracket	J Bracket	No. of pulley grooves
104773	FD-3	104773	11.64	9.76	5.21	5.98	1.998	3.50	3/8-16	2.76	7.50	3.59	Poly 8
104774	FD-3	104775	11.64	9.76	5.21	5.98	2.560	3.50	3/8-16	2.76	7.28	3.59	Poly 8
104776	FD-3	104776	11.64	9.76	5.21	4.90	1.998	3.50	3/8-16	2.76	7.50	3.59	Poly 8
104777	FD-3	104778	11.64	9.76	5.21	4.90	2.560	3.50	3/8-16	2.76	7.50	3.59	Poly 8
104785	FD-3	104785	11.64	9.76	5.21	5.98	1.998	3.50	3/8-16	2.76	7.50	3.59	Poly 8
104786	FD-3	104787	11.64	9.76	5.21	5.98	2.560	3.50	3/8-16	2.76	7.50	3.59	Poly 8
106723	FD-L	106724	11.55	9.76	5.21	5.50	2.560	3.50	3/8-16	2.76	7.28	3.59	Poly 8
106841	FD-3	106842	11.64	9.76	5.21	5.50	2.560	3.50	3/8-16	2.76	7.50	3.59	Poly 8



O.E. Fan Clutch Pc.No.	Model	Service Replacement	A Length	B Length	C to first groove	D pulley dia.	E pilot dia.	F bolt circle (fan)	Bolt hole size	G Bracket	H Bracket	J Bracket	No. of pulley grooves
106969	FD-L	106970	9.75	7.75	3.66	7.00	2.560	3.50	3/8-16	4.25	8.18	3.95	3
107889	FD-L	107889	9.27	8.48	3.66	7.00	2.560	3.50	3/8-16	4.25	8.18	3.95	3

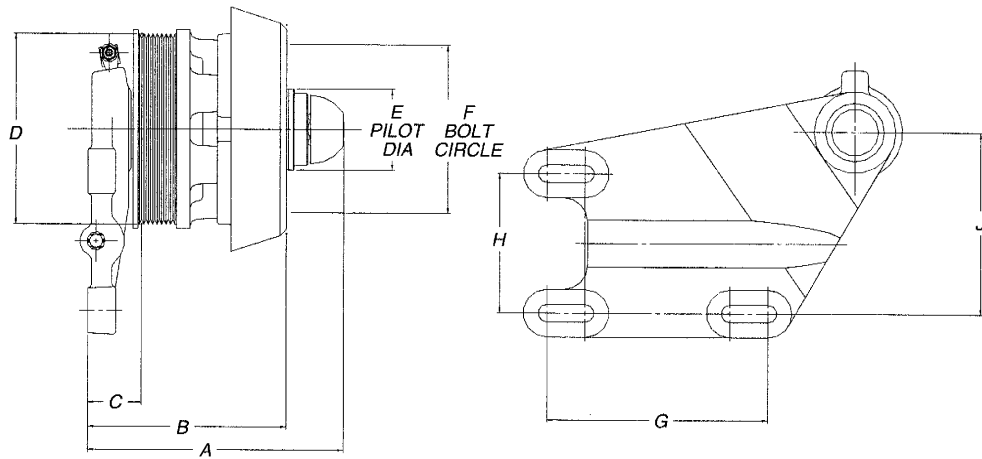


O.E. Fan Clutch Pc.No.	Model	Service Replacement	A Length	B Length	C to first groove	D pulley dia.	E pilot dia.	F bolt circle (fan)	Bolt hole size	G Bracket	H Bracket	J Bracket	No. of pulley grooves
107472	FD-L	107473	9.57	7.75	3.14	7.00	2.560	3.50	3/8-16	3.50	5.74	4.48	2

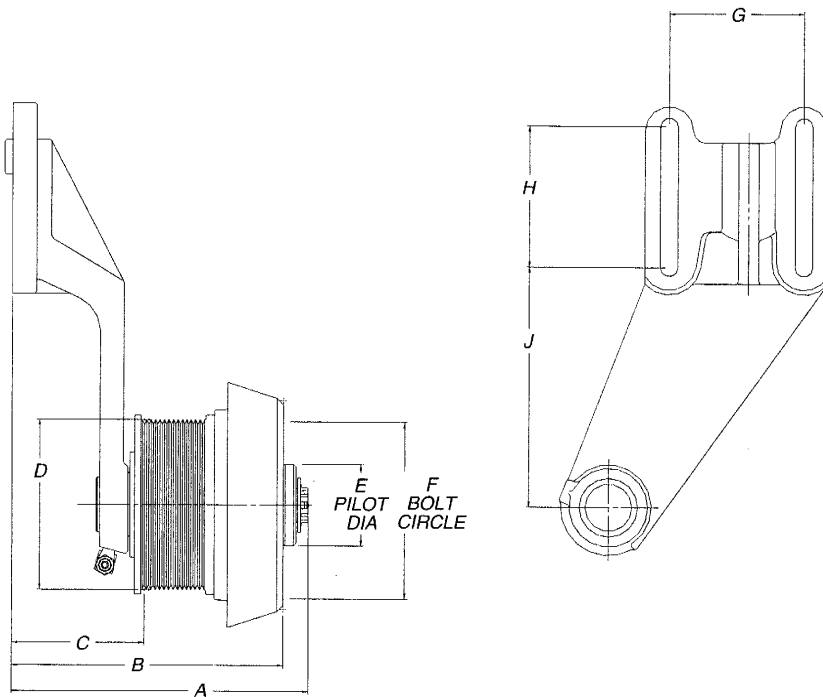


O.E. Fan Clutch Pc.No.	Model	Service Replacement	A Length	B Length	C to first groove	D pulley dia.	E pilot dia.	F bolt circle (fan)	Bolt hole size	G Bracket	H Bracket	J Bracket	No. of pulley grooves
107626	FD-L	107627	8.03	6.24	1.68	4.91	2.560	3.50	3/8-16	6.94	4.39	1.31	Poly 8
108458	FD-L	108461	8.03	6.24	1.68	5.89	2.560	3.50	3/8-16	6.94	4.39	1.31	Poly 8

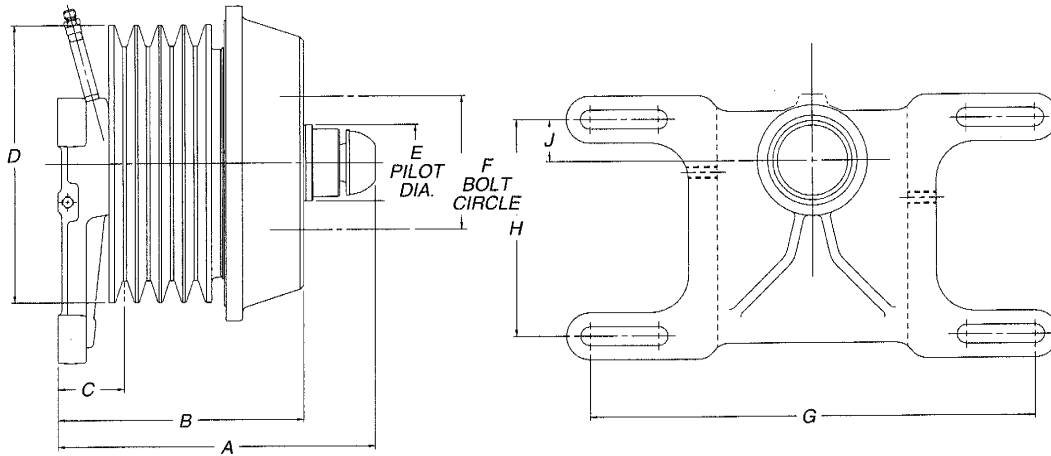




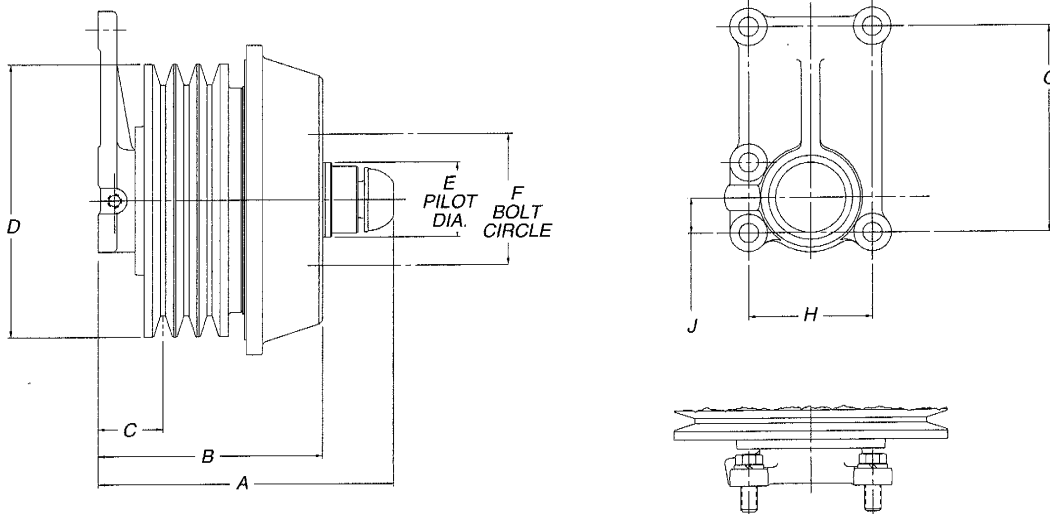
O.E. Fan Clutch Pc.No.	Model	Service Replacement	A Length	B Length	C to first groove	D pulley dia.	E pilot dia.	F bolt circle (fan)	Bolt hole size	G Bracket	H Bracket	J Bracket	No. of pulley grooves
108459	FD-L	108460	8.03	6.24	1.68	6.00	2.560	6.57	3/8-16	6.00	4.39	5.73	Poly 8



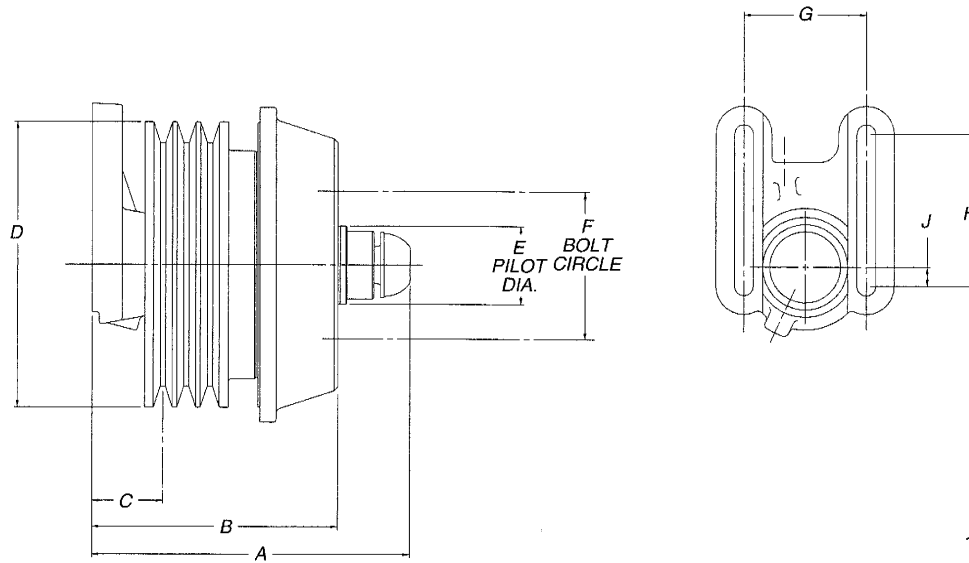
O.E. Fan Clutch Pc.No.	Model	Service Replacement	A Length	B Length	C to first groove	D pulley dia.	E pilot dia.	F bolt circle (fan)	Bolt hole size	G Bracket	H Bracket	J Bracket	No. of pulley grooves
107878	FD-L	107941	9.32	8.53	4.16	5.36	2.560	3.50	3/8-16	4.25	4.44	7.56	Poly 14



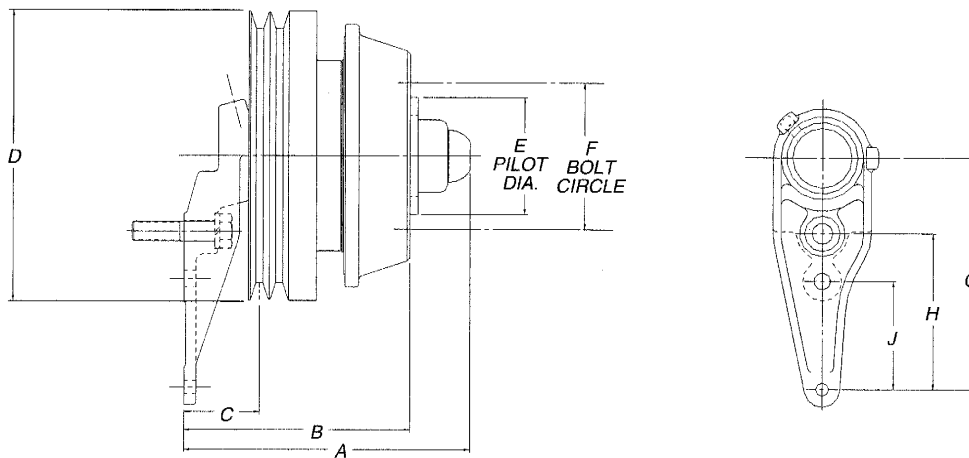
O.E. Fan Clutch Pc.No.	Model	Service Replacement	A Length	B Length	C to first groove	D pulley dia.	E pilot dia.	F bolt circle (fan)	Bolt hole size	G Bracket	H Bracket	J Bracket	No. of pulley grooves
104764	FD-3	104764	8.36	6.47	1.75	7.30	1.998	3.50	3/8-16	11.68	5.70	1.09	4
104766	FD-3	104765	8.36	6.47	1.75	7.30	2.560	3.50	3/8-16	11.68	5.70	1.09	4
104919	FD-3	104764	8.36	6.47	1.75	7.28	1.998	3.50	3/8-16	11.68	5.70	1.09	4



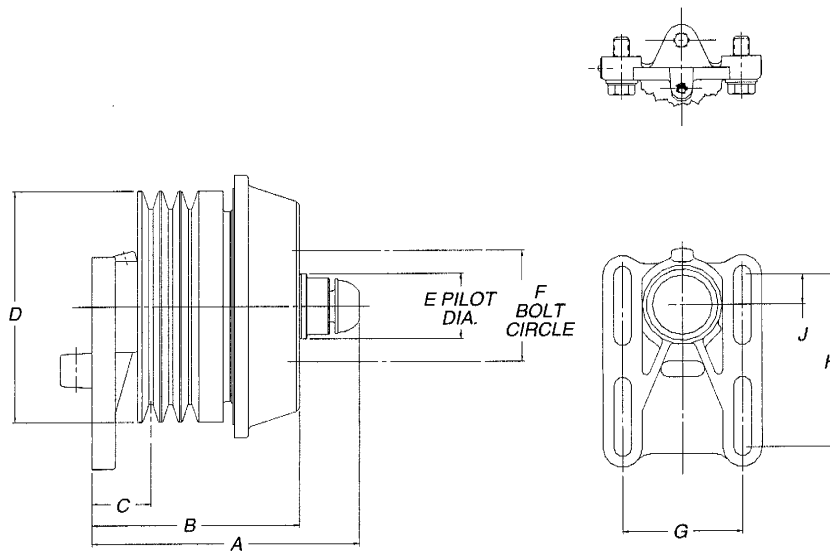
O.E. Fan Clutch Pc.No.	Model	Service Replacement	A Length	B Length	C to first groove	D pulley dia.	E pilot dia.	F bolt circle (fan)	Bolt hole size	G Bracket	H Bracket	J Bracket	No. of pulley grooves
104890	FD-3	104890	7.89	6.01	1.74	7.28	1.998	3.50	3/8-16	5.50	3.29	.94	3
104891	FD-3	104891	7.89	6.01	1.74	7.28	1.998	3.50	3/8-16	5.50	3.29	.94	3
107638	FD-3	107638	7.89	6.01	1.46	6.38	1.998	3.50	3/8-16	5.50	3.29	.94	2



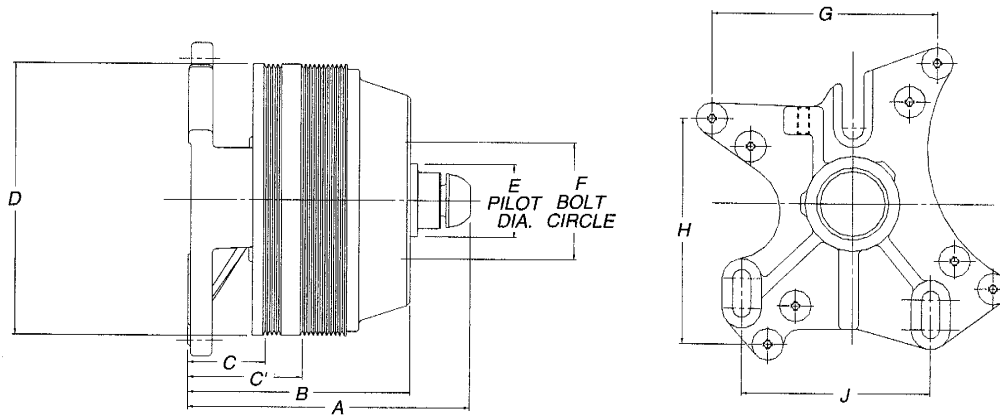
O.E. Fan Clutch Pc.No.	Model	Service Replacement	A Length	B Length	C to first groove	D pulley dia.	E pilot dia.	F bolt circle (fan)	Bolt hole size	G Bracket	H Bracket	J Bracket	No. of pulley grooves
104892	FD-3	104892	8.34	6.46	1.86	7.50	2.050	3.88	5/16-18	3.24	4.50	.75	3
104893	FD-3	104893	8.34	6.46	1.86	7.50	1.998	3.50	3/8-16	3.24	4.50	.75	3
104897	FD-3	104897	8.34	6.46	1.86	9.75	2.050	3.88	5/16-18	3.24	4.00	.50	2
106095	FD-3	106095	8.34	6.46	1.86	7.50	2.560	3.50	3/8-16	3.24	4.00	.50	3



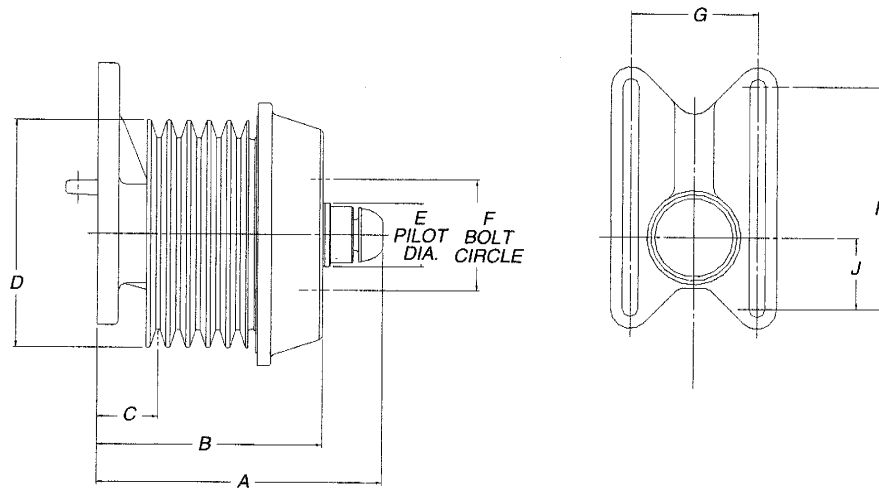
O.E. Fan Clutch Pc.No.	Model	Service Replacement	A Length	B Length	C to first groove	D pulley dia.	E pilot dia.	F bolt circle (fan)	Bolt hole size	G Bracket	H Bracket	J Bracket	No. of pulley grooves
104900	FD-3	104900	8.98	7.10	2.36	9.12	3.685	4.62	3/8-16	7.29	4.91	3.41	2



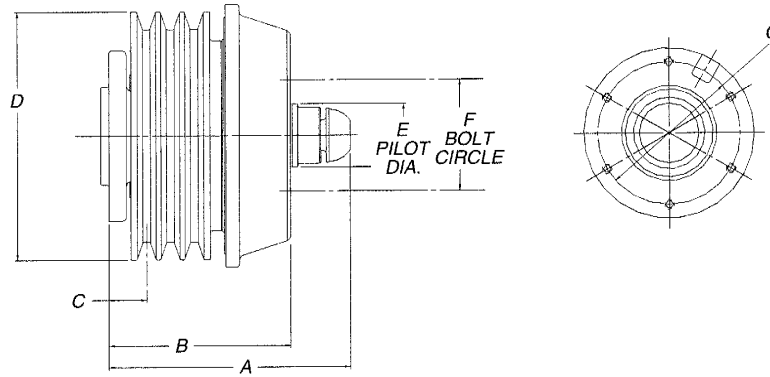
O.E. Fan Clutch Pc.No.	Model	Service Replacement	A Length	B Length	C to first groove	C'	D pulley dia.	D'	E pilot dia.	F bolt circle (fan)	Bolt hole size	G Bracket	H Bracket	J Bracket	No. of pulley grooves
104925	FD-3	104782	8.01	6.13	1.86	-	7.28	-	1.998	3.88	5/16-18	3.75	5.44	-	3
104783	FD-3	104784	8.02	6.13	1.86	-	7.28	-	2.560	3.50	3/8-16	3.75	5.44	.94	3
104873	FD-3	104873	8.44	6.56	1.86	-	7.28	-	2.050	3.87	5/16-18	3.75	5.44	.66	3
104874	FD-3	104874	8.44	6.56	1.86	-	7.28	-	1.998	3.87	5/16-18	3.75	5.44	.66	3
104875	FD-3	104875	8.44	6.56	1.86	-	7.28	-	1.998	3.50	3/8-16	3.75	5.44	.66	3
104876	FD-3	104876	8.44	6.56	1.86	-	7.28	-	1.998	3.87	5/16-18	3.75	5.44	.66	3
104883	FD-3	104883	8.01	6.13	1.86	-	9.12	-	1.998	3.50	3/8-16	3.75	5.44	-	3
104884	FD-3	104884	8.01	6.13	1.86	-	9.12	-	2.051	3.88	5/16-18	3.75	5.44	-	3
104885	FD-3	104885	8.01	6.13	1.86	-	9.12	-	2.051	3.88	5/16-18	3.75	5.44	-	3
104886	FD-3	104886	8.01	6.13	1.86	-	7.28	-	2.051	3.88	5/16-18	3.75	5.44	-	3
104887	FD-3	104887	8.01	6.13	1.86	-	9.12	-	1.998	3.50	3/8-16	3.75	5.44	-	3
106092	FD-3	106092	8.44	6.56	1.86	-	7.28	-	2.560	3.50	3/8-16	3.75	5.44	.94	3
106271	FD-3	106271	8.44	6.56	1.86	-	7.28	-	2.560	3.50	3/8-16	3.75	5.44	1.22	3
106866	FD-3	106866	8.38	6.50	1.57	2.36	9.12	7.25	1.998	3.50	3/8-16	5.31	5.31	.22	4
108621	FD-L	108621	8.29	6.50	1.63	2.38	9.05	6.20	2.560	3.50	3/8-16	5.31	8.00	1.14	4
108483	FD-L	108483	8.29	6.50	1.63	2.38	9.05	6.20	2.560	3.50	3/8-16	5.31	8.00	1.14	4
108533	FD-L	108533	8.29	6.50	1.63	2.38	9.05	7.00	2.560	3.50	3/8-16	5.31	8.00	1.14	4
108534	FD-L	108534	8.29	6.50	1.63	2.38	9.05	7.40	2.560	3.50	3/8-16	5.31	8.00	1.14	4
289537	FD-1	289537	7.60	6.00	1.83	-	6.25	-	1.998	3.87	5/16-18	3.75	5.44	.94	3



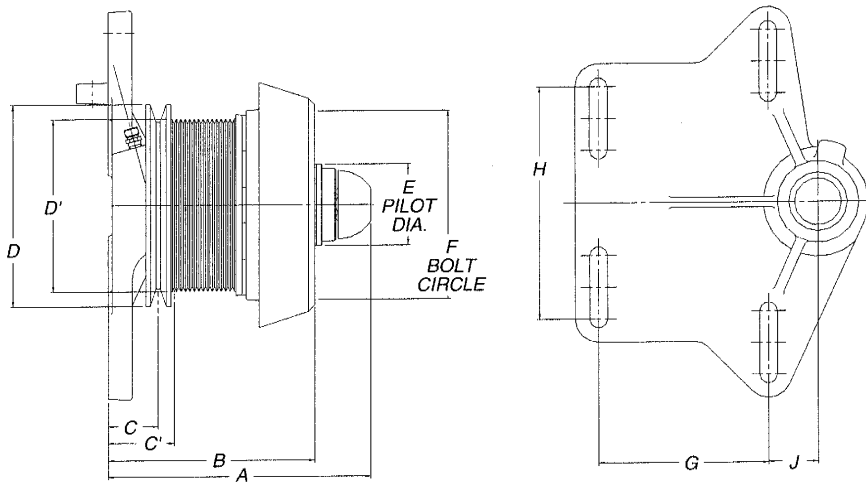
O.E. Fan Clutch Pc.No.	Model	Service Replacement	A Length	B Length	C to first groove	C'	D pulley dia.	E pilot dia.	F bolt circle (fan)	Bolt hole size	G Bracket	H Bracket	J Bracket	No. of pulley grooves
104899	FD-3	104899	8.87	6.98	2.44	3.60	8.54	3.685	4.62	3/8-16	7.10	7.10	5.94	Poly 4 Poly 8



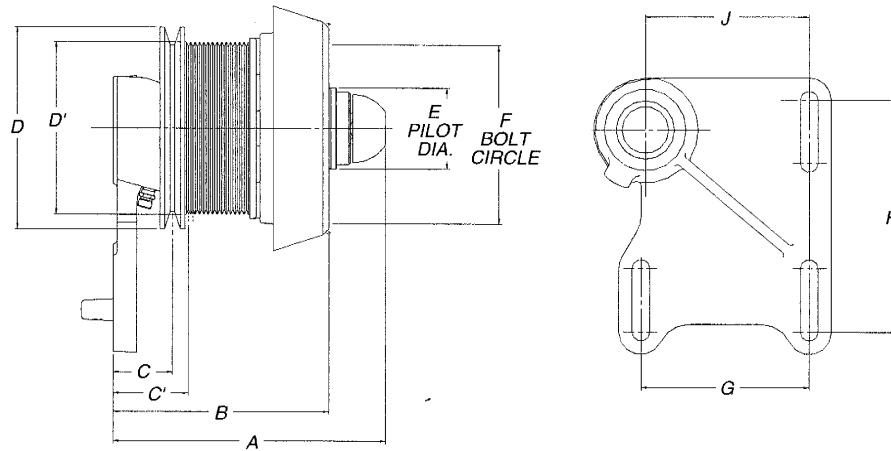
O.E. Fan Clutch Pc.No.	Model	Service Replacement	A Length	B Length	C to first groove	D pulley dia.	E pilot dia.	F bolt circle (fan)	Bolt hole size	G Bracket	H Bracket	J Bracket	No. of pulley grooves
104901	FD-3	104901	8.97	7.09	1.92	7.15	1.998	3.50	3/8-16	4.00	7.00	2.25	5
109032	FD-3	109032	8.97	7.09	1.92	7.15	1.998	3.50	3/8-16*	4.00	7.00	2.25	5



O.E. Fan Clutch Pc.No.	Model	Service Replacement	A Length	B Length	C to first groove	D pulley dia.	E pilot dia.	F bolt circle (fan)	Bolt hole size	G Bracket	No. of pulley grooves
104906	FD-3	104906	7.62	5.73	1.19	7.81	1.998	3.50	3/8-16	4.50	3



O.E. Fan Clutch Pc.No.	Model	Service Replacement	A Length	B Length	C to first groove	C'	D pulley dia.	D' pulley dia.	E pilot dia.	F bolt circle (fan)	Bolt hole size	G Bracket	H Bracket	J Bracket	No. of pulley grooves
108057	FD-L	108122	8.27	6.50	1.57	2.08	6.36	-	2.560	3.50	3/8-16	5.31	7.31	1.57	1 Poly 14
108378	FD-L	108378	8.57	6.80	1.88	2.38	6.36	5.43	2.560	3.50	3/8-16	5.31	7.31	1.57	1 Poly 14



O.E. Fan Clutch Pc.No.	Model	Service Replacement	A Length	B Length	C to first groove	C'	D pulley dia.	D' pulley dia.	E pilot dia.	F bolt circle (fan)	Bolt hole size	G Bracket	H Bracket	J Bracket	No. of pulley grooves
108445	FD-L	108450	8.57	6.80	1.88	2.38	6.36	5.43	2.560	3.50	3/8-16	5.31	7.31	5.17	1 Poly10

## **RETROFIT REPLACEMENT OR CHANGEOVER INFORMATION**

### **SELECTING THE CORRECT FAN CLUTCH**

1. Determine the correct Fan Clutch by identifying:
  - (A) Vehicle make and model
  - (B) Vehicle year
  - (C) Engine make and model
2. Refer to Vehicle Application data and select proper Fan Clutch.
3. The FD-1, FD-2, and TorqueMaster FD-3 Fan Clutches are interchangeable with respect to fit and function. Ford FD-3's with a 2.560 pilot diameter are interchangeable provided the fan is also replaced. Unless otherwise noted the FD-L is not interchangeable with the FD-1, FD-2 or FD-3 TorqueMaster Fan Clutch. While the FD-1 and FD-L can rotate in either direction the FD-2 and FD-3 rotates in a clockwise direction only unless otherwise noted. For applications other than those presented in this catalog it is recommended that the direction of the vehicle fan rotation be noted before installing the FD-3.
4. In cases where multiple hub/pulley numbers are shown for identical vehicle/engine combinations, it will be necessary to identify the hub/pulley assembly on the vehicle. Identification can be made by consulting the vehicle and/or engine parts book or dimensionally checking the existing hub/pulley assembly and ascertaining the (Reference Catalog Section 09-B) pulley diameter and number of pulley grooves and identify the proper Fan Clutch Pc. No. by comparing your dimensions with those listed.
5. In the event a vehicle/engine application cannot be found in the data presented, it will be necessary to refer to the bracket and dimensional data presented in section 09-B. When selecting a fan clutch from section 09-B the following requirements should be noted:
  - A. The diameter of the Bendix fan clutch pulley must be within plus or minus 1/2 inch of the hub or clutch being replaced.
  - B. The diameter of the fan being mounted on the Bendix fan clutch **MUST NOT EXCEED 34 INCHES.**
  - C. The weight of the fan must **NOT EXCEED 30 POUNDS** for Bendix fan clutch models FD-1, FD-2 or FD-3 or **15 POUNDS** for the FD-L model. The maximum fan drive torque capacity for the FD-L is 750 in-lbs.
  - D. The fan horsepower per 1,000 rpm engine speed is as follows: 14HP for FD-1 and 17.5 HP for the FD-2 and TorqueMaster FD-3.

If unable to meet these requirements the Bendix fan clutch should not be installed.

### **INSTALLATION INFORMATION**

Each fan clutch includes installation instructions.

Some retrofit installation require spacers. Spacer requirements are listed, and on new installations spacers must be purchased separately. When replacing an existing Bendix Fan Clutch, existing spacers may be reused, however total spacer(s) thickness **MUST NOT EXCEED 1-1/2 INCHES.**

A Thermo-Pneumatic Control Valve controls the fan clutch and is used in all fan clutch installations. See catalog page 09-A- for piece number information.

If vehicle to be retrofitted is equipped with radiator shutter or radiator mounted air conditioning or both, additional control components are required. These components are listed on page 09-A-11.



# BROCKWAY

FAN CLUTCH  
VEHICLE APPLICATION  
DATA

CATALOG  
09-C-2

BROCKWAY								
CUMMINS ENGINE								
ENGINE	VEHICLE / RATIO	FD-3 2.00 DIA. PILOT		FD-3 2.56 DIA. PILOT		FD-L 2.56 DIA. PILOT		REMARKS
		YEAR	PART NO.	YEAR	PART NO.	YEAR	PART NO.	
NTC & PT SERIES	ALL	75-78	104872					
		75-78	104871					
DETROIT DIESEL ENGINE								
ENGINE	VEHICLE / RATIO	FD-3 2.00 DIA. PILOT		FD-3 2.56 DIA. PILOT		FD-L 2.56 DIA. PILOT		REMARKS
		YEAR	PART NO.	YEAR	PART NO.	YEAR	PART NO.	
8V71, N, T	ALL	75-78	104873					

# DINA AUTOBUS

DETROIT DIESEL ENGINE								
ENGINE	VEHICLE / RATIO	FD-3 2.00 DIA. PILOT		FD-3 2.56 DIA. PILOT		FD-L 2.56 DIA. PILOT		REMARKS
		YEAR	PART NO.	YEAR	PART NO.	YEAR	PART NO.	
SERIES 60		89-	107638					

# EAGLE INTERNATIONAL (BUS)

DETROIT DIESEL ENGINE								
ENGINE	VEHICLE / RATIO	FD-3 2.00 DIA. PILOT		FD-3 2.56 DIA. PILOT		FD-L 2.56 DIA. PILOT		REMARKS
		YEAR	PART NO.	YEAR	PART NO.	YEAR	PART NO.	
6V92TA	BUS MODEL 10	84	104906	84	104907			

# FLXIBLE

CUMMINS ENGINE								
ENGINE	VEHICLE / RATIO	FD-3 2.00 DIA. PILOT		FD-3 2.56 DIA. PILOT		FD-L 2.56 DIA. PILOT		REMARKS
		YEAR	PART NO.	YEAR	PART NO.	YEAR	PART NO.	
L-10		88	107580					
		89	107940					
		89	107970					
			108323					

<b>FORD</b>											
<b>CATERPILLAR ENGINE</b>											
ENGINE	VEHICLE / RATIO	FD-3 2.00 DIA. PILOT			FD-3 2.56 DIA. PILOT			FD-L 2.56 DIA. PILOT			REMARKS
		YEAR	FORD ID PART NO.	BENDIX ID PART NO.	YEAR	FORD ID PART NO.	BENDIX ID PART NO.	YEAR	FORD ID PART NO.	BENDIX ID PART NO.	
3176	L, LTL LLA, LTLA							92-	107900	107901	
3406	L, LTL LLTLA	84-88		104758	84-88	104759	104760	90-91	106973	106974	
				104779	84-88	104780	104781	91-	108462	108463	
					88-90	104988	104990		91-	108432	108464
	CL, CLT	77-79		104870	80-88	104768	104769				
		80-88		104767	88-	104987	104989				
<b>CUMMINS ENGINE</b>											
ENGINE	VEHICLE / RATIO	FD-3 2.00 DIA. PILOT			FD-3 2.56 DIA. PILOT			FD-L 2.56 DIA. PILOT			REMARKS
		YEAR	FORD ID PART NO.	BENDIX ID PART NO.	YEAR	FORD ID PART NO.	BENDIX ID PART NO.	YEAR	FORD ID PART NO.	BENDIX ID PART NO.	
L-10	LTN 9000	83-84		104773	83-84	104774	104775				
		83-84		104776	83-84	104777	104778				
	L, LTL	86-		104776	86-	104777	104778	88-90	106723	106724	
					88-	106841	106842	90-91	107626	107627	
								91-	108458	108461	
LLA, LTLA			104785		104787	104786	91-	108459	108460		
N-14	W, WT9000	73-76		104770	73-76	104771	104772				
		73-79		104770	73-79	104771	104772				
	L	80-		104750	80-	104752	104756				
				104751	80-	104753	104757				
	L, LTL	81-		104750	81-	104752	104756	89-91	106969	106970	
				104751	81-	104753	104757	91-	107889	107942	
CL, CLT	77-		104761	77-	104762	104763	90-	107472	107473		
LLA, LTLA							91-	107878	107941		
<b>DETROIT DIESEL ENGINE</b>											
ENGINE	VEHICLE / RATIO	FD-3 2.00 DIA. PILOT			FD-3 2.56 DIA. PILOT			FD-L 2.56 DIA. PILOT			REMARKS
		YEAR	FORD ID PART NO.	BENDIX ID PART NO.	YEAR	FORD ID PART NO.	BENDIX ID PART NO.	YEAR	FORD ID PART NO.	BENDIX ID PART NO.	
8V71T	L	75-79		104890							
8V71N	L	74-79		104782	74-79	104783					
6V92, 8V71, 8V92	CL, CLT	80-		104764	80-	104765	104784				
SERIES 60	L					104766		90-	108057	108122	
	LTA							92-	108378	108380	
	LTLA							92-	108445	108450	

FREIGHTLINER								
CATERPILLAR ENGINE								
ENGINE	VEHICLE / RATIO	FD-3 2.00 DIA. PILOT		FD-3 2.56 DIA. PILOT		FD-L 2.56 DIA. PILOT		REMARKS
		YEAR	PART NO.	YEAR	PART NO.	YEAR	PART NO.	
1693 SERIES	ALL	70-	104901					425 HP ENGINE
3176	1 : 1					90-	108497	
3406	ALL	75-	104905					
	1 : 1					89-	107544	
	1.2 : 1					89-	107543	
3406B	1 : 1	85-	104905					
CUMMINS ENGINE								
ENGINE	VEHICLE / RATIO	FD-3 2.00 DIA. PILOT		FD-3 2.56 DIA. PILOT		FD-L 2.56 DIA. PILOT		REMARKS
		YEAR	PART NO.	YEAR	PART NO.	YEAR	PART NO.	
NTC SERIES	ALL	70-	104872					
		75-	104871					
NH SERIES	ALL	74-	104872					
NTC 335 & 350	ALL	74-	104904					
L-10	ALL	74-	104902	74-	106099			
		86-	104965					
N-14	COE & CONV.					89-	106272	
	1 : 1		106844			89-	107542	
	1.2 : 1					89-	107571	
DETROIT DIESEL ENGINE								
ENGINE	VEHICLE / RATIO	FD-3 2.00 DIA. PILOT		FD-3 2.56 DIA. PILOT		FD-L 2.56 DIA. PILOT		REMARKS
		YEAR	PART NO.	YEAR	PART NO.	YEAR	PART NO.	
8V71N, T, TA	ALL	70-	104873					
		75-	104885					
6V92, 8V92	ALL	75-82	104884					
		83-84	104875					
SERIES 60						89-	108483	
						90-	108488	
		1.2 : 1				91-	108621	
		1.1:1				91-	108488	

**GMC**

**CATERPILLAR ENGINE**

ENGINE	VEHICLE / RATIO	FD-3 2.00 DIA. PILOT		FD-3 2.56 DIA. PILOT		FD-L 2.56 DIA. PILOT		REMARKS
		YEAR	PART NO.	YEAR	PART NO.	YEAR	PART NO.	
	3406	75 & EARLIER	104870					

**CUMMINS ENGINE**

ENGINE	VEHICLE / RATIO	FD-3 2.00 DIA. PILOT		FD-3 2.56 DIA. PILOT		FD-L 2.56 DIA. PILOT		REMARKS
		YEAR	PART NO.	YEAR	PART NO.	YEAR	PART NO.	
NTC SERIES	ASTRO TITAN			74	104896			
NH-230 SUPER 250 NTC SERIES	BRIGADIER, BRUIN, GENERAL, BISON			74	104898			

**DETROIT DIESEL ENGINE**

ENGINE	VEHICLE / RATIO	FD-3 2.00 DIA. PILOT		FD-3 2.56 DIA. PILOT		FD-L 2.56 DIA. PILOT		REMARKS
		YEAR	PART NO.	YEAR	PART NO.	YEAR	PART NO.	
8V71, 6V92, 8V92	ASTRO TITAN		104900	76-	104899			
8V71T			104891					
6V-53	HV & JV 9500 CONV.	75 & EARLIER	104782					
8V-92	DK9502, D9, ASTRO/TITAN	75-78 79-82	104899					
6V-92TT	HJ & JJ 9500 CONV.	76 & EARLIER						

**HALLIBURTON**

**CATERPILLAR ENGINE**

ENGINE	VEHICLE / RATIO	FD-3 2.00 DIA. PILOT		FD-3 2.56 DIA. PILOT		FD-L 2.56 DIA. PILOT		REMARKS
		YEAR	PART NO.	YEAR	PART NO.	YEAR	PART NO.	
3406		91-	108817					

**MARMON**

**CATERPILLAR ENGINE**

ENGINE	VEHICLE / RATIO	FD-3 2.00 DIA. PILOT		FD-3 2.56 DIA. PILOT		FD-L 2.56 DIA. PILOT		REMARKS
		YEAR	PART NO.	YEAR	PART NO.	YEAR	PART NO.	
3306	ALL		104901					
3406	ALL	75-	104870	75-	106091			
3408	ALL	75-	104889					

**CUMMINS ENGINE**

ENGINE	VEHICLE / RATIO	FD-3 2.00 DIA. PILOT		FD-3 2.56 DIA. PILOT		FD-L 2.56 DIA. PILOT		REMARKS
		YEAR	PART NO.	YEAR	PART NO.	YEAR	PART NO.	
NTC SERIES	ALL	75-	104877					
L-10			103782					

**DETROIT DIESEL ENGINE**

ENGINE	VEHICLE / RATIO	FD-3 2.00 DIA. PILOT		FD-3 2.56 DIA. PILOT		FD-L 2.56 DIA. PILOT		REMARKS
		YEAR	PART NO.	YEAR	PART NO.	YEAR	PART NO.	
6V92,8V92	ALL	75-	104873					

KENWORTH								
CATERPILLAR ENGINE								
ENGINE / RATIO	VEHICLE YEAR	FD-3 2.00 DIA. PILOT		FD-3 2.56 DIA. PILOT		FD-L 2.56 DIA. PILOT		REMARKS
		PART NO.	YEAR	PART NO.	YEAR	PART NO.		
1693 SERIES	ALL	70-	104901					
3306	ALL	74-	104901					
3406	ALL	74-	104870	74-	106091			
		88-	107480					
3408	ALL	76-	104889					CENTER MOUNT
CUMMINS ENGINE								
ENGINE	VEHICLE / RATIO	FD-3 2.00 DIA. PILOT		FD-3 2.56 DIA. PILOT		FD-L 2.56 DIA. PILOT		REMARKS
		YEAR	PART NO.	YEAR	PART NO.	YEAR	PART NO.	
NTA,NTC SERIES	ALL	70-	104872					WHIN ENGINE IS FORWARD MOUNT
		70-	104871					
NTC SERIES	ALL		104725					
			104735					
		74-	104877					
LCF	NTC 335	81-	104904					
L-10	ALL	83-	104773	83-	104775			
			104902		106099			
N-14					106350			
DETROIT DIESEL ENGINE								
ENGINE	VEHICLE / RATIO	FD-3 2.00 DIA. PILOT		FD-3 2.56 DIA. PILOT		FD-L 2.56 DIA. PILOT		REMARKS
		YEAR	PART NO.	YEAR	PART NO.	YEAR	PART NO.	
6171 8V71 8V71T 12V71	ALL	70-73	104873					
V6 V8 V12	ALL EXCEPT LCF	74-	104884					
6L71	ALL EXCEPT LCF		104893					
		74-	104892	74-	106095			
6V	LCF	81-	104885					
			104887					

NAVISTAR								
CATERPILLAR ENGINE								
ENGINE	VEHICLE / RATIO	FD-3 2.00 DIA. PILOT		FD-3 2.56 DIA. PILOT		FD-L 2.56 DIA. PILOT		REMARKS
		YEAR	PART NO.	YEAR	PART NO.	YEAR	PART NO.	
3406-B	CO-9670	81-	104870	81-	106091			
	9370	84-	104870	84-	106091			
	1 : 1				106270			
	1.13 : 1				106235			
3406	4070-B TRANSTAR II	74-81	104870	74-81	106091			
	4200-4300 CONVENTIONAL TRANSTAR II	75-81	104870	75-81	106091			
	8000-9000				106291			
3406 ATTAC	8300	86-	104905					
CUMMINS ENGINE								
ENGINE	VEHICLE / RATIO	FD-3 2.00 DIA. PILOT		FD-3 2.56 DIA. PILOT		FD-L 2.56 DIA. PILOT		REMARKS
		YEAR	PART NO.	YEAR	PART NO.	YEAR	PART NO.	
NTC 290 300 350 400 475 FORMULA 290 350	CO-9670	79-	104872					WHEN ENGINE IS FORWARD MOUNT
	9370	84-	104872					
NTC 290 350 NTA 400	4200-4300 CONVENTIONAL	75-84	104872					
SUPER 250 270 NTA 370	4200-4300 CONVENTIONAL TRANSTAR I	73-74	104872					
SUPER 250 NTC-290/350 NTA-400	TRANSTAR II 4070-A 4070-B	74-79	104878					
NTC SERIES	TRANSTAR II 4070-A 4070-B	74-79	104877					
	4100 CONCO	75-78	104904					
	1 : 1		104872		106238			
					106237			
SUPER 250	PAYSTAR 5000	73-	104878					LOW FLOW COOL
L-10	CO-9670 9370	85-	104965					
	S-SERIES 2375 / F2375	83-84	104902		106272			LOW FLOW COOL
	1.25 : 1				106236			
N-14	8000 9000			91-	108006			

NAVISTAR								
DETROIT DIESEL ENGINE								
ENGINE	VEHICLE / RATIO	FD-3 2.00 DIA. PILOT		FD-3 2.56 DIA. PILOT		FD-L 2.56 DIA. PILOT		REMARKS
		YEAR	PART NO.	YEAR	PART NO.	YEAR	PART NO.	
6V92TTAC	CO-9670	79-	104874	79-	106092			
6V92TAC					106271			
8V92TTAC	9370	84-	104874	84-	106092			
8V92TAC					106271			
6V92TT	TRANSTAR II 4070-B 4100 CONCO	74-78	104874	74-78	106092			
8V92T					106271			
8V71NT								
6-71	4200-4300 TRANSTAR CONVENTIONAL	74-84	104874	74-84	106092			
8V71NT					106271			
6-71	4200-4300	73-74	104892	73-74	106095			
12V71	CONVENTIONAL	73-74	104874	73-74	106092			
	TRANSTAR I				106271			
6V92TT	4200-4300	75-84	104874	75-84	106092			
8V92T	CONVENTIONAL				106271			
	TRANSTAR II							
6-71 N	4070A							
	TRANSTAR I	72-74	104892	72-74	106095			
	PAYSTAR 5000	73-	104892	73-	106095			
8V71T	PAYSTAR 5000	73-	104874	73-	106092			
					106271			

<b>PETERBILT</b>								
<b>CATERPILLAR ENGINE</b>								
ENGINE	VEHICLE / RATIO	FD-3 2.00 DIA. PILOT		FD-3 2.56 DIA. PILOT		FD-L 2.56 DIA. PILOT		REMARKS
		YEAR	PART NO.	YEAR	PART NO.	YEAR	PART NO.	
3306			104901					
			109032					
3406	ALL	75-	104870	75-	106091			
			104905					
			109034					
3408	ALL	76-	104889					
<b>CUMMINS ENGINE</b>								
ENGINE	VEHICLE / RATIO	FD-3 2.00 DIA. PILOT		FD-3 2.56 DIA. PILOT		FD-L 2.56 DIA. PILOT		REMARKS
		YEAR	PART NO.	YEAR	PART NO.	YEAR	PART NO.	
NTC SERIES	ALL	72-74	104872					
	BIG CAM CONV.	75-	104871					
L-10			104902					
		109033						
<b>DETROIT DIESEL ENGINE</b>								
ENGINE / RATIO	VEHICLE YEAR	FD-3 2.00 DIA. PILOT		FD-3 2.56 DIA. PILOT		FD-L 2.56 DIA. PILOT		REMARKS
		PART NO.	YEAR	PART NO.	YEAR	PART NO.		
8V71	ALL	72-74	104873					
	75-	104885						
8V71,6V92 8V92	ALL	75-	104884					CONVENTIONAL
		81-	104886					C.O.E. ONLY
SERIES 60		87-	106866					



VOLVO								
CATERPILLAR ENGINE								
ENGINE	VEHICLE / RATIO	FD-3 2.00 DIA. PILOT		FD-3 2.56 DIA. PILOT		FD-L 2.56 DIA. PILOT		REMARKS
		YEAR	PART NO.	YEAR	PART NO.	YEAR	PART NO.	
3406	ALL	76-82	104870	76-82	106091			
	1 : 1		104905					
	1.2 : 1			86-	106120			
3408	ALL	76-82	104889					CENTER MOUNT
3176	1 : 1					91-	108497	
CUMMINS ENGINE								
ENGINE	VEHICLE / RATIO	FD-3 2.00 DIA. PILOT		FD-3 2.56 DIA. PILOT		FD-L 2.56 DIA. PILOT		REMARKS
		YEAR	PART NO.	YEAR	PART NO.	YEAR	PART NO.	
NTC SERIES	EXPEDITER I	73-76	104904					
	ROAD BOSS-2	76-82	104894	76-82	106097			
	COMMANDER-2		104895		106098			
	WC WH				106450			
	ROAD BOSS-2	76-82	104880	76-82	106096			
COMMANDER-2			104881		106093			
			104882					
L-10, NTC	AUTOCAR			85-	106272			
ALL V ENGINES	ROAD BOSS-2							
	COMMANDER-2	ALL	104884					
ROAD BOSS-2								
L-10 N-14	1.2 : 1		104903	86-	106099			
					104891			
			89-	107815				
DETROIT DIESEL ENGINE								
ENGINE	VEHICLE / RATIO	FD-3 2.00 DIA. PILOT		FD-3 2.56 DIA. PILOT		FD-L 2.56 DIA. PILOT		REMARKS
		YEAR	PART NO.	YEAR	PART NO.	YEAR	PART NO.	
8V71	ROAD BOSS-2	80-	104892					
6V92	COMMANDER-2	76-	104885					
8V92	EXPEDITER-2	76-	104883	76-	106094			
	AUTOCAR	75-	104782					
6V92	WX	83-	104874	83-	106092			
			104876					
6V 8V	WC WH	83-	104883					
6-71	WC WH	83-	104897					
	AUTOCAR	75-	104892					
SERIES 60		87-	106866			89-	108483	

**CATALOG**  
**09-C-11**

**FAN CLUTCH**  
**VEHICLE APPLICATION**  
**DATA**

**WESTERN STAR**  
**TRUCK COMPANY**

WESTERN STAR TRUCK COMPANY								
CATERPILLAR ENGINE								
ENGINE	VEHICLE / RATIO	FD-3 2.00 DIA. PILOT		FD-3 2.56 DIA. PILOT		FD-L 2.56 DIA. PILOT		REMARKS
		YEAR	PART NO.	YEAR	PART NO.	YEAR	PART NO.	
3406	ALL	74-82	104870	74-82	106091			
3408	ALL	74-	104889					
CUMMINS ENGINE								
ENGINE	VEHICLE / RATIO	FD-3 2.00 DIA. PILOT		FD-3 2.56 DIA. PILOT		FD-L 2.56 DIA. PILOT		REMARKS
		YEAR	PART NO.	YEAR	PART NO.	YEAR	PART NO.	
NTC 250-300	ALL	74-80	104871					
NTC 350-475	ALL	74-86	104872					
DETROIT DIESEL ENGINE								
ENGINE	VEHICLE / RATIO	FD-3 2.00 DIA. PILOT		FD-3 2.56 DIA. PILOT		FD-L 2.56 DIA. PILOT		REMARKS
		YEAR	PART NO.	YEAR	PART NO.	YEAR	PART NO.	
6N71 6T71	ALL	74-	104897					
8V71 8V92 6V92	ALL	74-	104885					